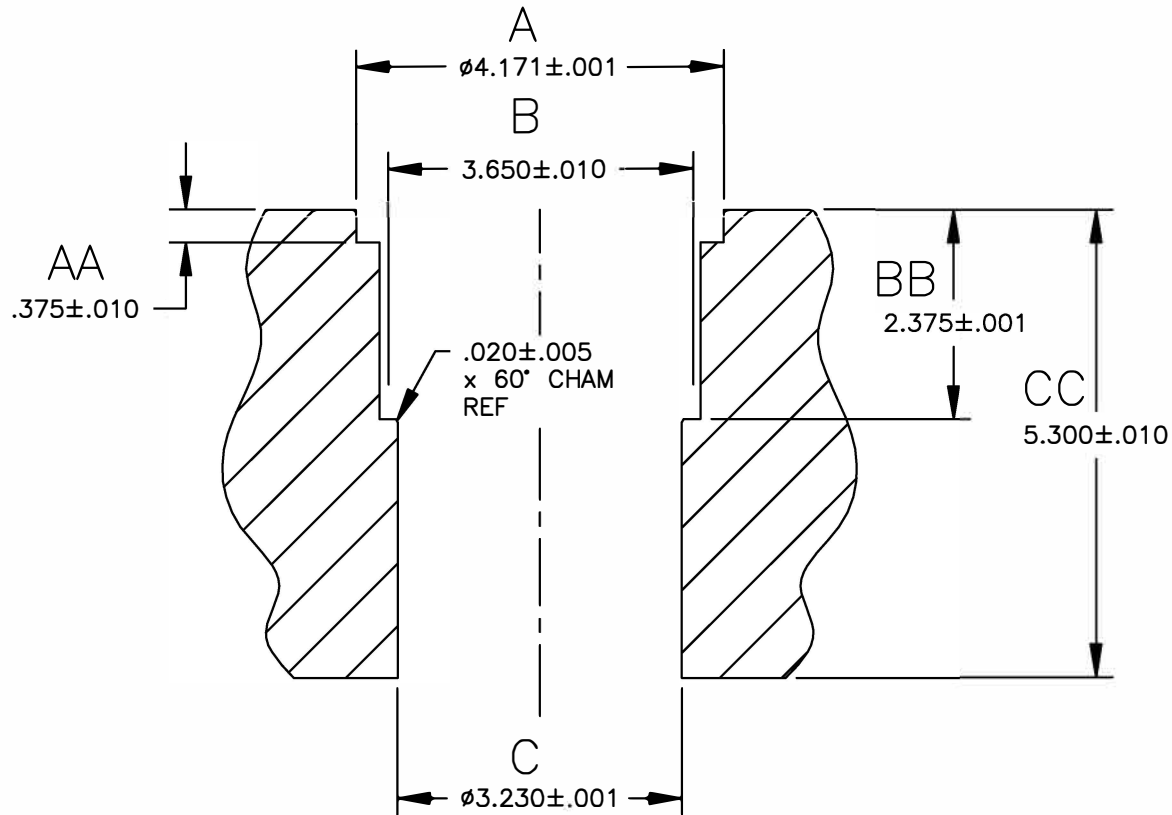



NOTE:

1. DECK BLOCK SURFACE AFTER SLEEVE INSTALLATION.
2. MACHINE DIMENSION A AT .001 TO .002 CLEARANCE
3. MACHINE DIMENSION B TO REMOVE ALUM. CYLINDER WALL
4. MACHINE DIMENSION C AT .001 CLEARANCE
5. MACHINE BLOCK AT BORE CENTERS OF 84mm / 3.307

REVISIONS			
REV	DESCRIPTION	DATE	APPROVAL



THE INFORMATION DEPICTED HEREIN IS PROPRIETARY DESIGN INFORMATION WHICH IS COPYRIGHTED DARTON INTERNATIONAL, INC. NO DUPLICATION OR USE OF THIS INFORMATION IS PERMITTED WITHOUT EXPRESS WRITTEN CONSENT OF DARTON INTERNATIONAL, INC.

DR. BY: CAD DEPT	 Darton International, Inc. Carlsbad, CA USA (800) 713-2786 (760) 603-9895 FAX (760) 603-9629 WWW.DARTON-INTERNATIONAL.COM
DATE: 04/14/09	
CHK'D BY:	TITLE: BLOCK SPECIFICATION- MINI COOPER MK2 77-77.5mm
MATERIAL:	SIZE: A DWG NO. 800-800 REV -
HARDNESS:	SCALE 1/2 SHEET 1 OF 1