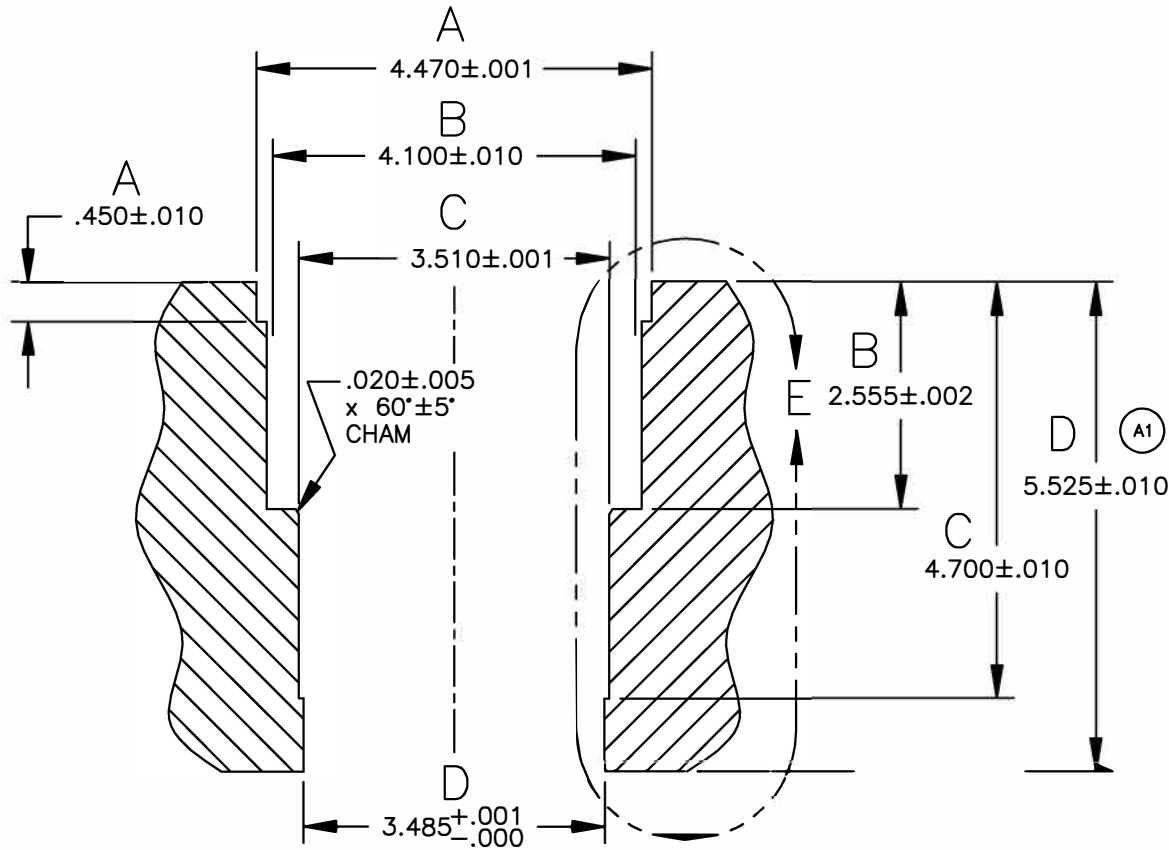



**NOTE:**

1. DECK BLOCK SURFACE AFTER SLEEVE INSTALLATION.
2. BLOCK BORE CENTER 91mm - (3.583")
3. ON #1 CYL REINSTALL A COOLANT FLOW RESTRICTOR PLUG, OR WELD TO MATCH OEM BETWEEN SLEEVE O.D. AND WATER JACKET WALL.

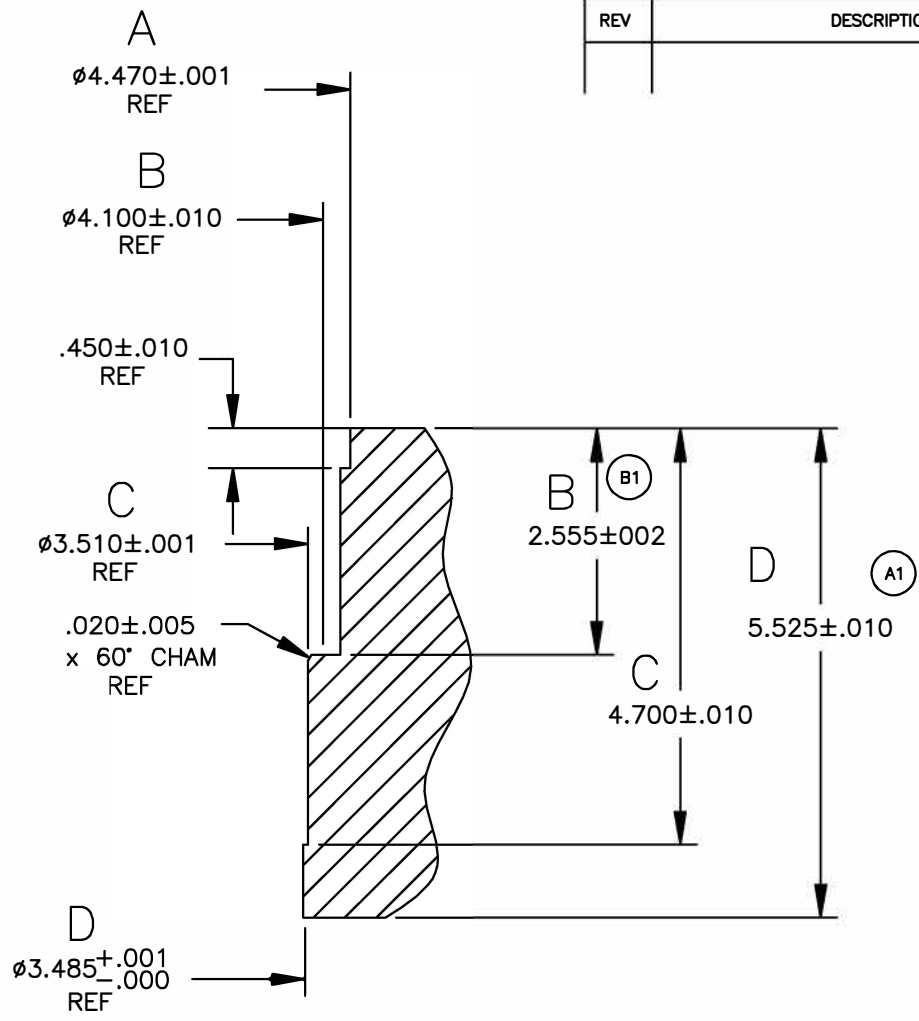
REVISIONS			
REV	DESCRIPTION	DATE	APPROVAL



THE INFORMATION DEPICTED HEREIN IS PROPRIETARY DESIGN INFORMATION WHICH IS COPYRIGHTED DARTON INTERNATIONAL, INC. NO DUPLICATION OR USE OF THIS INFORMATION IS PERMITTED WITHOUT EXPRESS WRITTEN CONSENT OF DARTON INTERNATIONAL, INC.

DR. BY:	CAD DEPT	 <b>Darton International, Inc.</b> Carlsbad, CA USA (800) 713-2786 (760) 603-9895 FAX (760) 603-9629 WWW.DARTON-INTERNATIONAL.COM
DATE:	06/20/08	
CHKD BY:		TITLE
MATERIAL:		BLOCK SPECIFICATION-2.8L VOLVO 6 CYL M.I.D. 83-85mm
HARDNESS:		SIZE
		A
		DWG NO.
		800-551
		REV
		-
		SCALE
		1/2
		SHEET
		1 OF 2

REVISIONS			
REV	DESCRIPTION	DATE	APPROVAL



DETAIL E  
NO SCALE

THE INFORMATION DEPICTED HEREIN IS PROPRIETARY DESIGN INFORMATION WHICH IS COPYRIGHTED BY DARTON INTERNATIONAL, INC. NO DUPLICATION OR USE OF THIS INFORMATION IS PERMITTED WITHOUT EXPRESS WRITTEN CONSENT OF DARTON INTERNATIONAL, INC.

	<b>Darton International, Inc.</b> Carlsbad, CA USA (800) 713-2786 (760) 603-9895 FAX (760) 603-9629 WWW.DARTON-INTERNATIONAL.COM		
	TITLE BLOCK SPECIFICATION-2.8L VOLVO 6 CYL M.I.D. 83/85mm		
SIZE A	DWG NO. 800-551	REV -	SCALE 1/2
SHEET 2 OF 2		SHEET 2 OF 2	