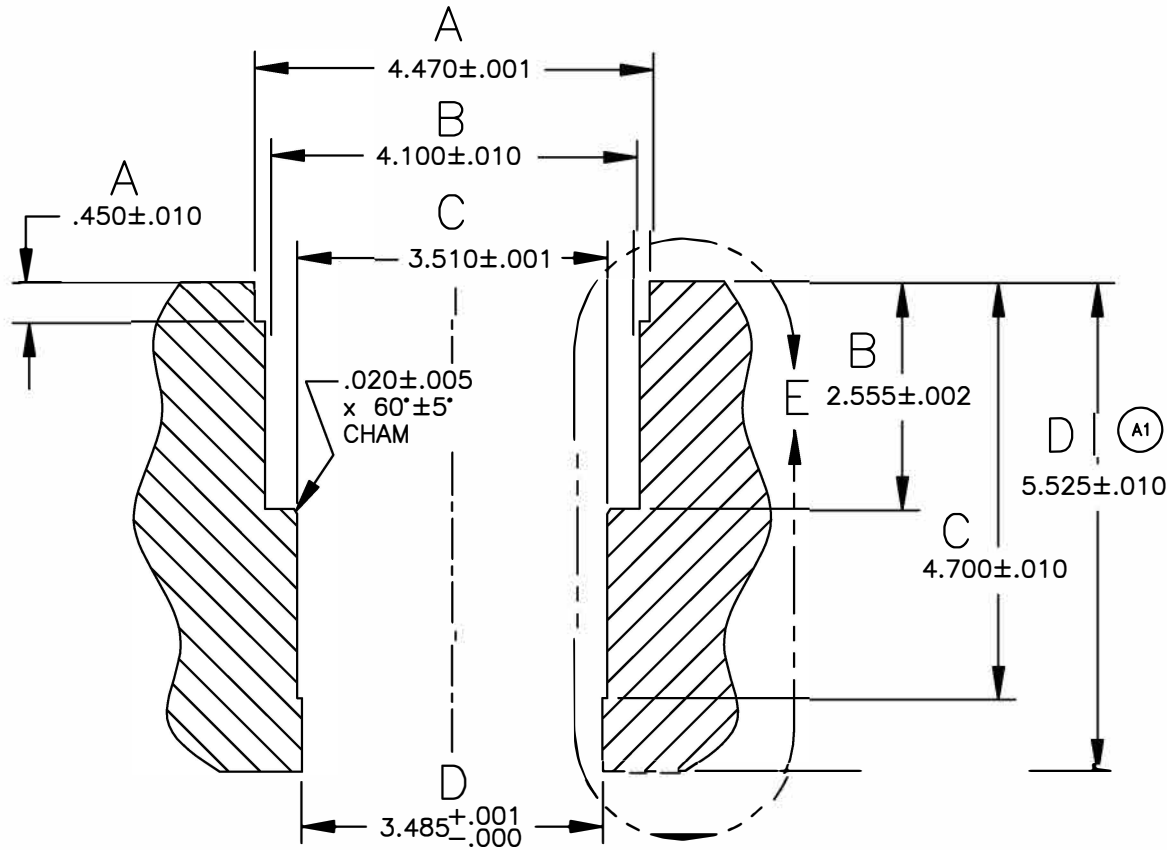



NOTE:

1. DECK BLOCK SURFACE AFTER SLEEVE INSTALLATION.
2. BLOCK BORE CENTER 91mm - (3.583")
3. ON #1 CYL REINSTALL A COOLANT FLOW RESTRICTOR PLUG, OR WELD TO MATCH OEM BETWEEN SLEEVE O.D. AND WATER JACKET WALL.

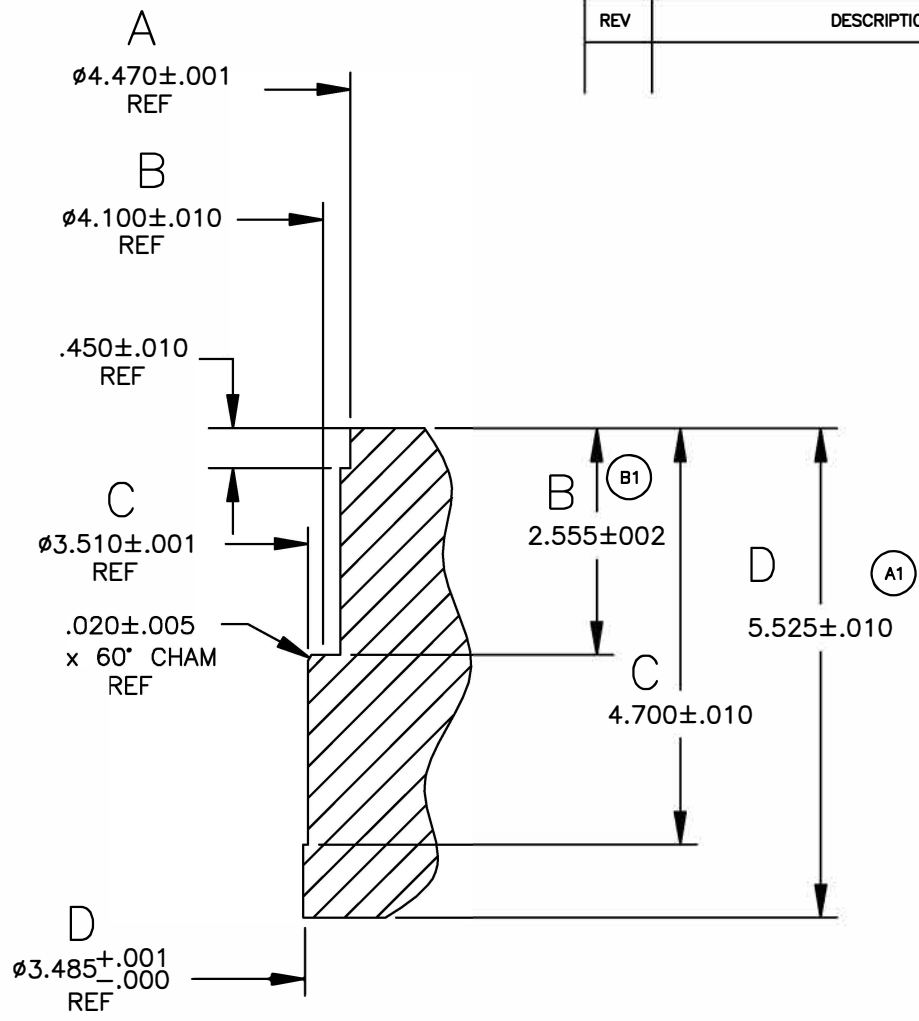
| REVISIONS | | | |
|-----------|-------------|------|----------|
| REV | DESCRIPTION | DATE | APPROVAL |
| | | | |
| | | | |



THE INFORMATION DEPICTED HEREIN IS PROPRIETARY DESIGN INFORMATION WHICH IS COPYRIGHTED DARTON INTERNATIONAL, INC. NO DUPLICATION OR USE OF THIS INFORMATION IS PERMITTED WITHOUT EXPRESS WRITTEN CONSENT OF DARTON INTERNATIONAL, INC.

| | | | | | |
|-----------|----------|---|--|---|--------|
| DR. DEPT: | CAD DEPT |  | Darton International, Inc. Carlsbad, CA USA (800) 713-2786 (760) 603-9895 FAX (760) 603-9629 WWW.DARTON-INTERNATIONAL.COM | | |
| DATE: | 06/20/08 | | TITLE: | BLOCK SPECIFICATION-2.5L VOLVO 5 CYL 83-85mm | |
| MATERIAL: | | | SIZE: | A | REV: B |
| HARDNESS: | | SCALE: | 1/2 | SHEET 1 OF 2 | |
| DWG NO.: | 800-550 | | | | |

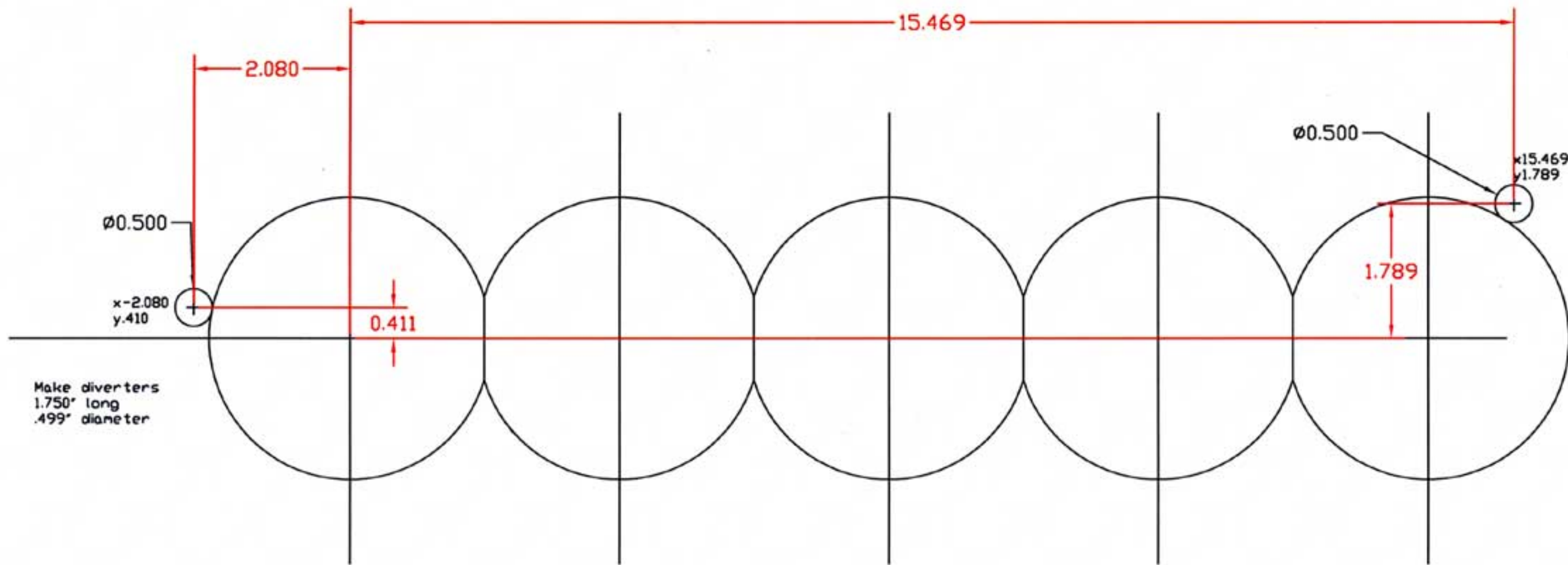
| REVISIONS | | | |
|-----------|-------------|------|----------|
| REV | DESCRIPTION | DATE | APPROVAL |
| | | | |



DETAIL E
NO SCALE

THE INFORMATION DEPICTED HEREIN IS PROPRIETARY DESIGN INFORMATION WHICH IS COPYRIGHTED BY DARTON INTERNATIONAL, INC. NO DUPLICATION OR USE OF THIS INFORMATION IS PERMITTED WITHOUT EXPRESS WRITTEN CONSENT OF DARTON INTERNATIONAL, INC.

| | | |
|--|----------------------------|-----------------|
|  Darton International, Inc. Carlsbad, CA USA (800) 713-2786 (760) 603-9895 FAX (760) 603-9629 WWW.DARTON-INTERNATIONAL.COM | | |
| TITLE BLOCK SPECIFICATION-2.5L VOLVO 5 CYL ML.D. 83 85mm | | |
| SIZE A | DWG NO. 800-550 | REV B |
| SCALE 1/2 | SHEET 2 OF 2 | |



Make diverters
1.750" long
.499" diameter