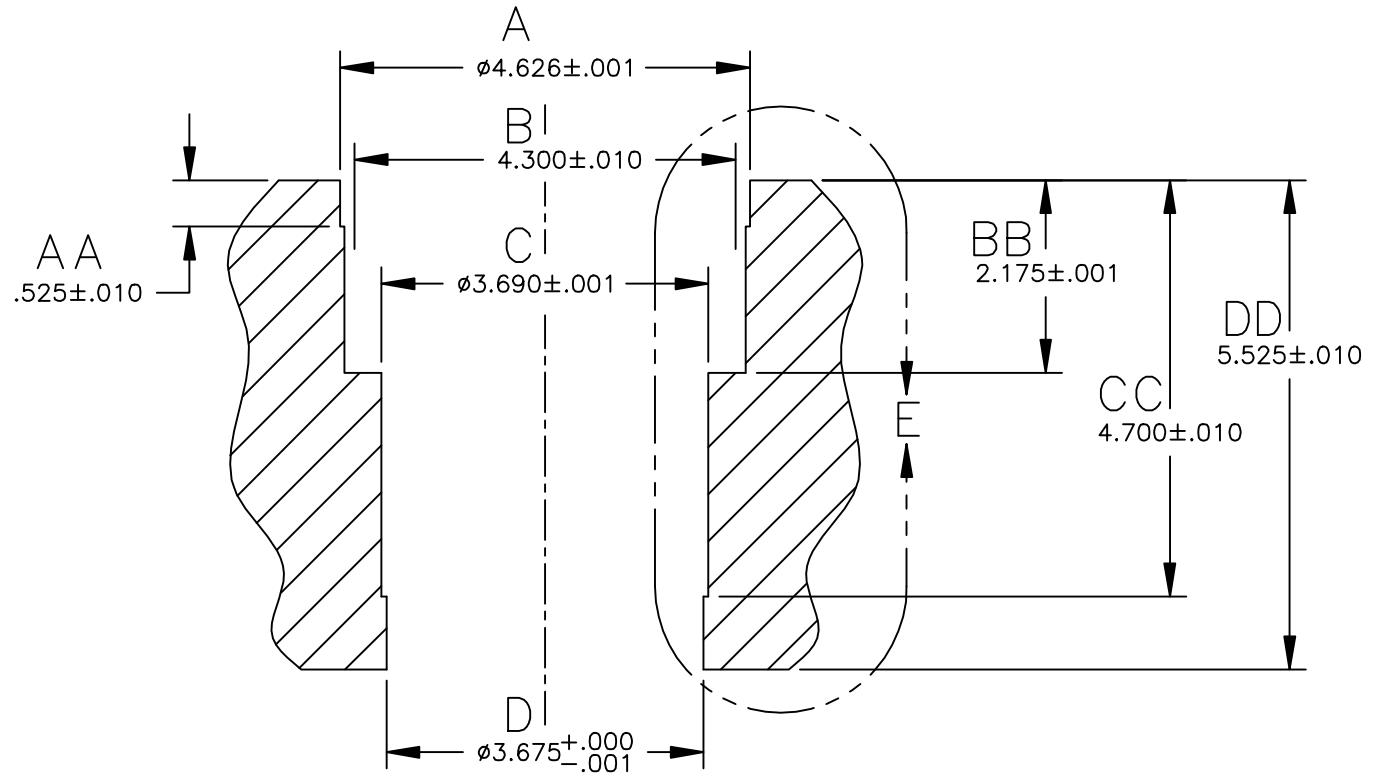



NOTE:

1. DECK BLOCK SURFACE AFTER SLEEVE INSTALLATION.
2. MACHINE BLOCK AT BORE CENTER OF 3.7795 (96mm)

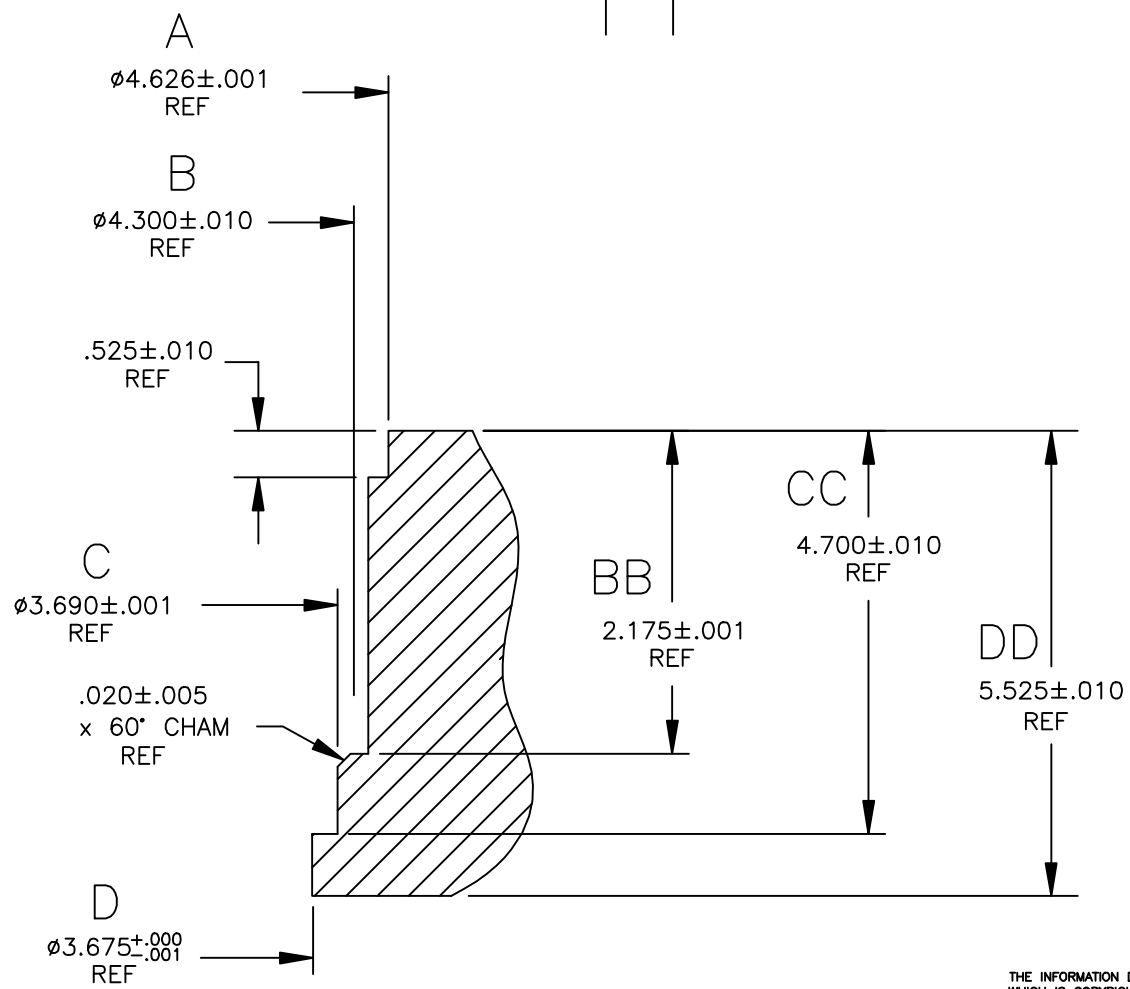
REVISIONS			
REV	DESCRIPTION	DATE	APPROVAL



THE INFORMATION DEPICTED HEREIN IS PROPRIETARY DESIGN INFORMATION WHICH IS COPYRIGHTED DARTON INTERNATIONAL, INC. NO DUPLICATION OR USE OF THIS INFORMATION IS PERMITTED WITHOUT EXPRESS WRITTEN CONSENT OF DARTON INTERNATIONAL, INC.

DR. BY: CAD DEPT	 Darton International, Inc. Carlsbad, CA USA (800) 713-2786 (760) 603-9895 FAX (760) 603-9629 WWW.DARTON-INTERNATIONAL.COM
DATE: 12/22/08	
CHK'D BY:	TITLE: BLOCK SPECIFICATION- DODGE M.I.D. SRT4 86/90mm
MATERIAL:	SIZE: A
HARDNESS:	DWG NO. 800-180
SCALE: 1/2	REV
SHEET 1 OF 2	

REVISIONS			
REV	DESCRIPTION	DATE	APPROVAL



DETAIL E
NO SCALE

THE INFORMATION DEPICTED HEREIN IS PROPRIETARY DESIGN INFORMATION WHICH IS COPYRIGHTED BY DARTON INTERNATIONAL, INC. NO DUPLICATION OR USE OF THIS INFORMATION IS PERMITTED WITHOUT EXPRESS WRITTEN CONSENT OF DARTON INTERNATIONAL, INC.

 Darton International, Inc. Carlsbad, CA USA (800) 713-2786 (760) 603-9895 FAX (760) 603-9629 WWW.DARTON-INTERNATIONAL.COM		
TITLE BLOCK SPECIFICATION - DODGE M.I.D. SRT4 86/90mm		
SIZE A	DWG NO. 800-180	REV -
SCALE 1/2	SHEET 2 OF 2	