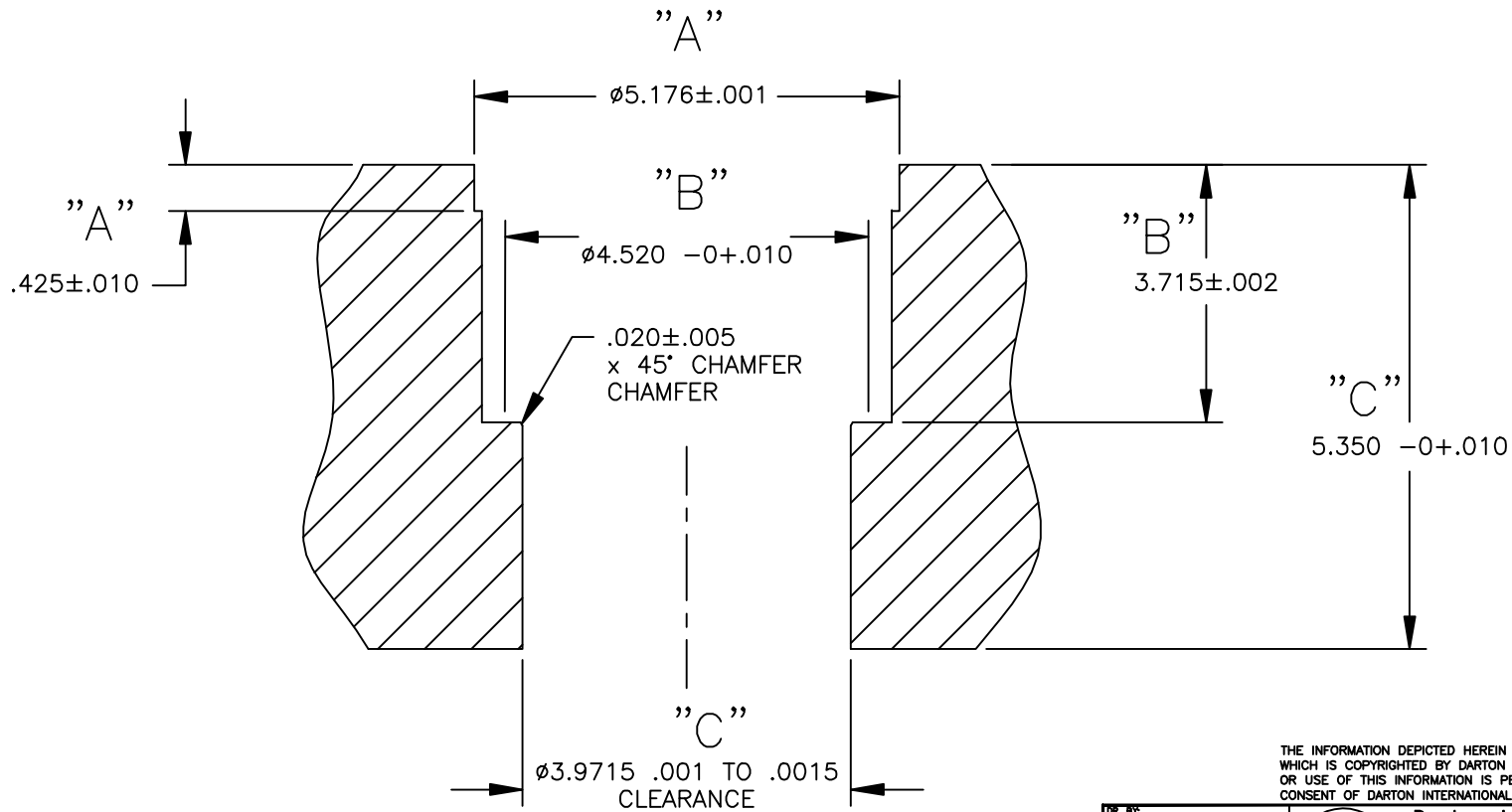


NOTE:


1. PRIOR TO BORING FOR SLEEVE INSTALLATION,
BORE EXISTING SLEEVE TO FINISH BORE DIMENSION $+0.010$
X 5.760 DEEP
2. BORE CENTER - 106MM X 4.174
3. DECK SURFACE AFTER SEEVE INSTALLATION
TO GASKET Ra SPEC.

REVISIONS

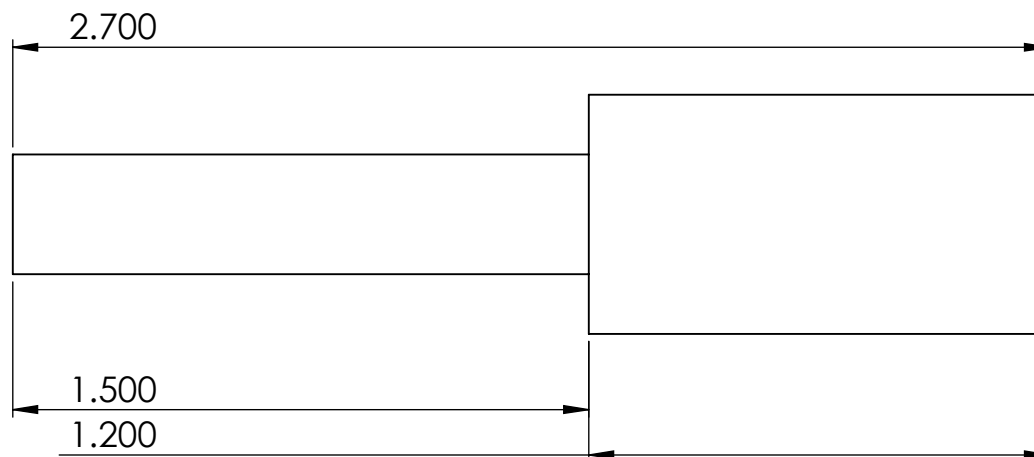
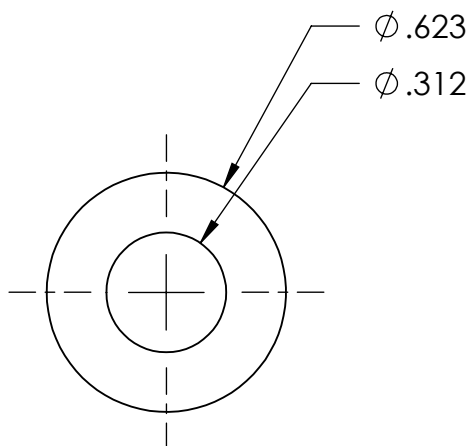
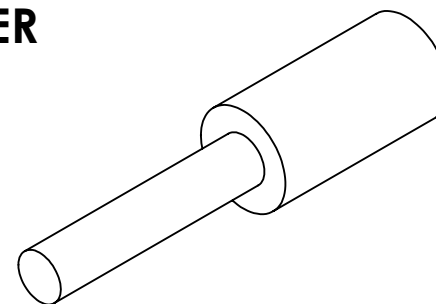
REV	DESCRIPTION	DATE	APPROVAL



THE INFORMATION DEPICTED HEREIN IS PROPRIETARY DESIGN INFORMATION WHICH IS COPYRIGHTED BY DARTON INTERNATIONAL, INC. NO DUPLICATION OR USE OF THIS INFORMATION IS PERMITTED WITHOUT EXPRESS WRITTEN CONSENT OF DARTON INTERNATIONAL, INC.


DR. BY:	CAD DEPT	 Darton International, Inc. Carlsbad, CA USA (800) 713-2786 (760) 603-9895 FAX (760) 603-9629 WWW.DARTON-INTERNATIONAL.COM		
DATE:	7/10/17			
CHK'D BY:		TITLE		
MATERIAL:		BLOCK SPECIFICATION - FORD 3.5 V6 ECO BOOST		
HARDNESS:		SIZE	DWG NO.	REV
		A	700-140	-
		SCALE	SHEET	
		1/2	1 OF 1	

TO BE USED ONLY ON BLOCKS WITH A STOCK DIVERTER



TURN USING 6061 T6 ALUMINUM BAR STOCK

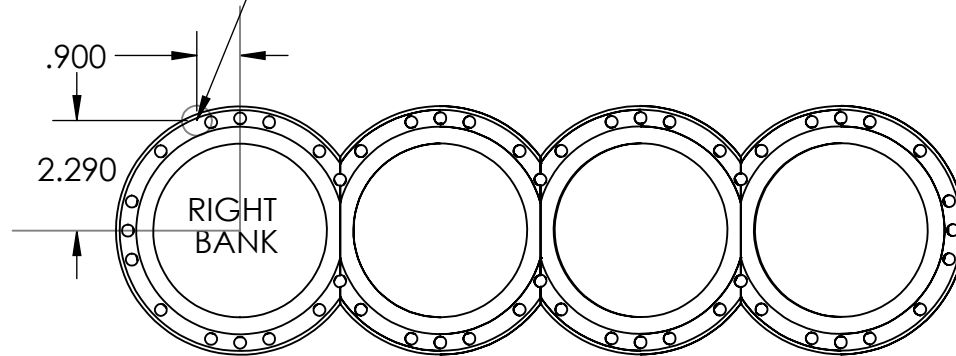
THE INFORMATION DEPICTED HEREIN IS PROPRIETARY DESIGN INFORMATION WHICH IS COPYRIGHTED DARTON INTERNATIONAL, INC. NO DUPLICATION OR USE OF THIS INFORMATION IS PERMITTED WITHOUT EXPRESS WRITTEN CONSENT OF DARTON INTERNATIONAL, INC.

DRAWN BY: Brian Baker		 CARLSBAD, CA USA (800) 713-2786 (760) 603-9895 FAX (760) 603-9629 DARTONSLEEVES.COM		
DATE 6/5/2019				
CHK'D BY:		FORD 3.5 V6 ECO BOOST		
MATERIAL:				
HARDNESS: 10X		SIZE A	DWG. NO. COOLANT DIVERTER	REV -
		SCALE: 1:1	WEIGHT:	SHEET 1 OF 1

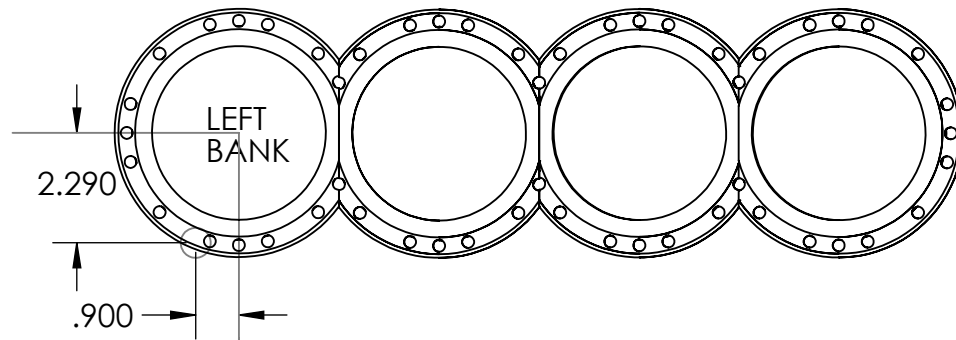
AFTER SLEEVES HAVE BEEN INSTALLED AND LOCTITE HAS CURED MILL 2 PLCS FOR COOLANT DIVERTER INSTALLATION. PILOT W/ SQUARE CORNER CENTER CUTTING MILL .5 X 1.190DEEP THEN FINISH W/ SQUARE CORNER .625 X 1.190DEEP

TO BE USED ONLY ON BLOCKS WITH A STOCK DIVERTER


INSTALL DIVERTERS WITH LOCTITE 518. DIVERTERS SHOULD STAND ABOVE FACE OF BLOCK BY .005-.010PRIOR TO DECKING.



BLOCK FRONT



THE INFORMATION DEPICTED HEREIN IS PROPRIETARY DESIGN INFORMATION WHICH IS COPYRIGHTED DARTON INTERNATIONAL, INC. NO DUPLICATION OR USE OF THIS INFORMATION IS PERMITTED WITHOUT EXPRESS WRITTEN CONSENT OF DARTON INTERNATIONAL, INC.

DRAWN BY: Brian Baker		 CARLSBAD, CA USA (800) 713-2786 (760) 603-9895 FAX (760) 603-9629 DARTONSLEEVES.COM		
DATE 6/5/2019				
CHK'D BY:		FORD 3.5 V6 COOLANT DIVERTER LOCATION		
MATERIAL:				
HARDNESS: 10A		SIZE A	DWG. NO. 700-140	REV -
SCALE: 1:5		WEIGHT:		SHEET 1 OF 1