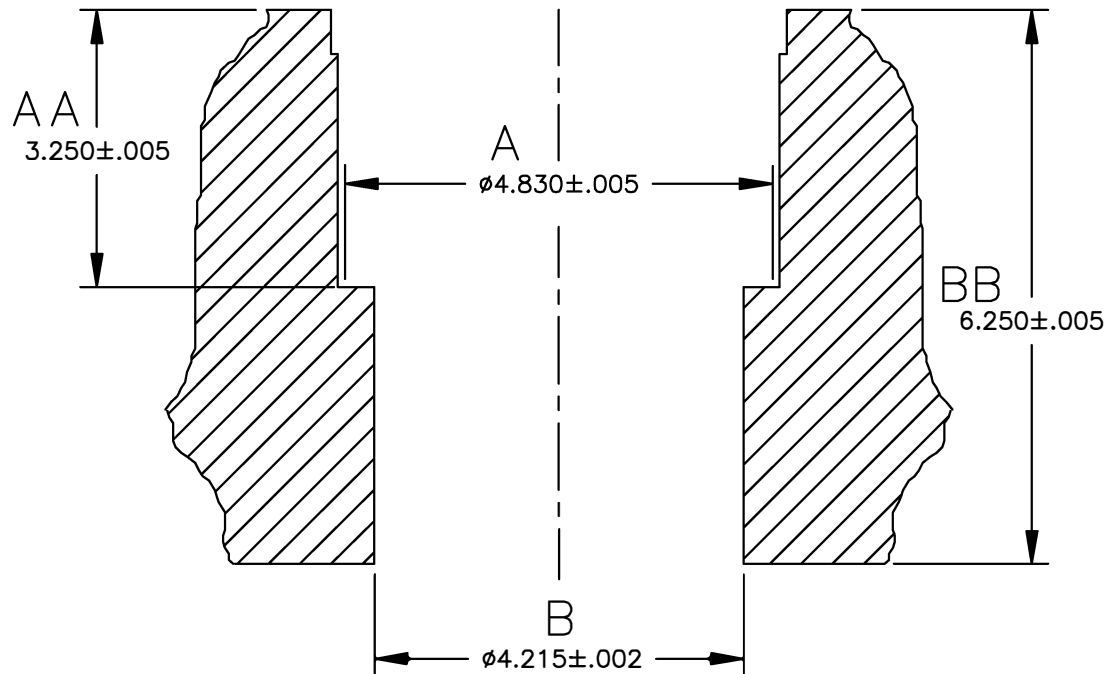


1st STEP: ROUGHING OUT CYLINDER #1


M.I.D. KIT #600-170 & #600-180 REF

REVISIONS

REV	DESCRIPTION	DATE	APPROVAL

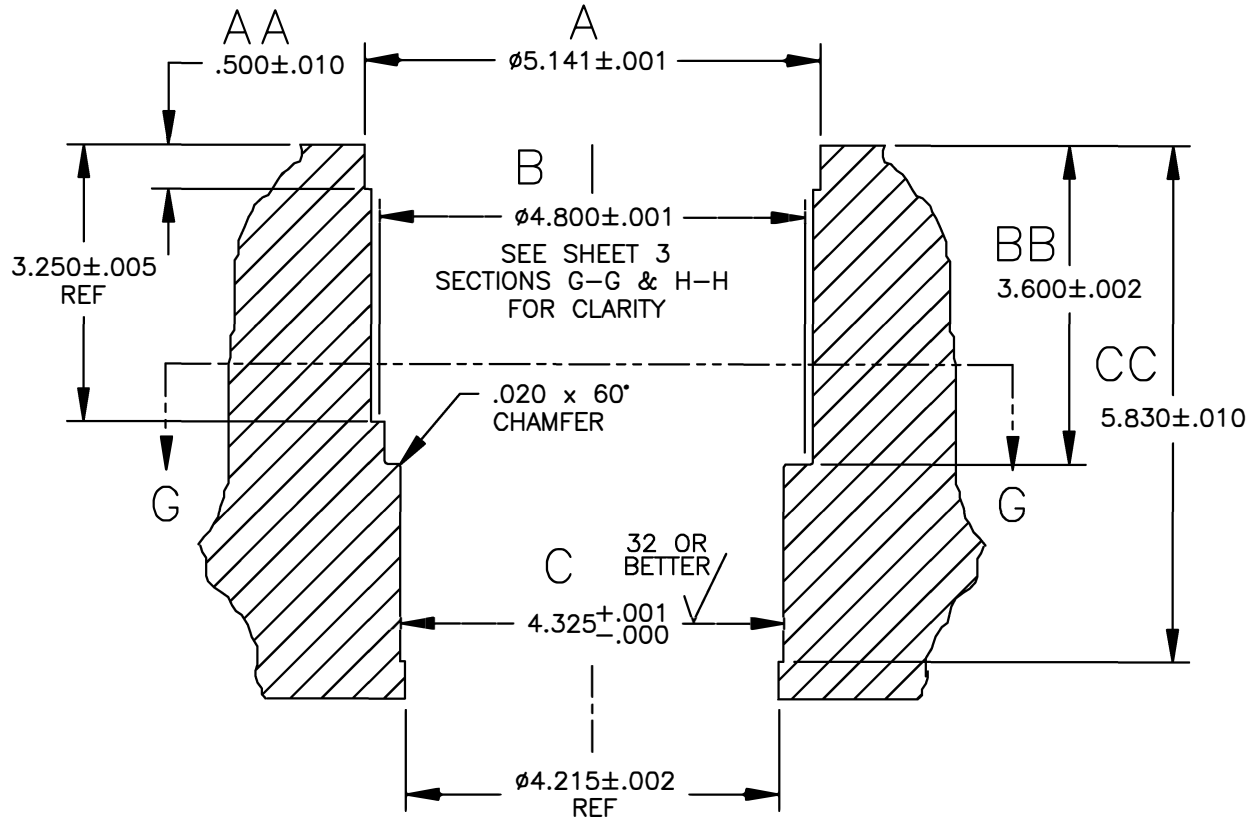


THE INFORMATION DEPICTED HEREIN IS PROPRIETARY DESIGN INFORMATION WHICH IS COPYRIGHTED BY DARTON INTERNATIONAL, INC. NO DUPLICATION OR USE OF THIS INFORMATION IS PERMITTED WITHOUT EXPRESS WRITTEN CONSENT OF DARTON INTERNATIONAL, INC.


DR. BY: CAD DEPT	 Darton International, Inc. Carlsbad, CA USA (800) 713-2786 (760) 603-9895 FAX (760) 603-9629 WWW.DARTON-INTERNATIONAL.COM
DATE: 3/30/07	
CHKD BY:	TITLE: BLOCK SPECIFICATION- LS-2/7 4.125-4.200 BORE
MATERIAL:	SIZE: A
H. ADDRESS:	DWG. NO.: CYLINDER #1
SCALE: 1/2	REV: -
SHEET 1 OF 3	

2nd STEP: FINISHING CYLINDER #1

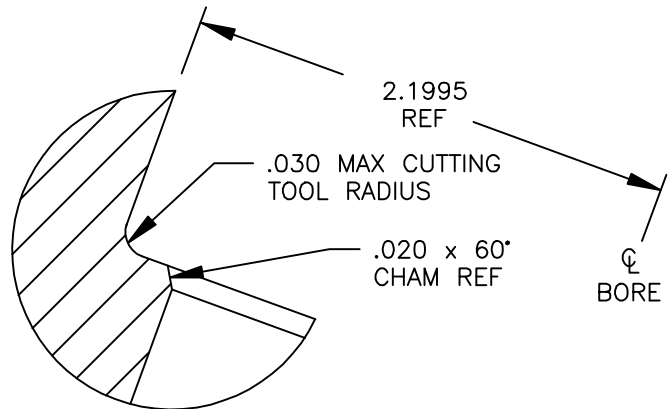
REVISIONS			
REV	DESCRIPTION	DATE	APPROVAL



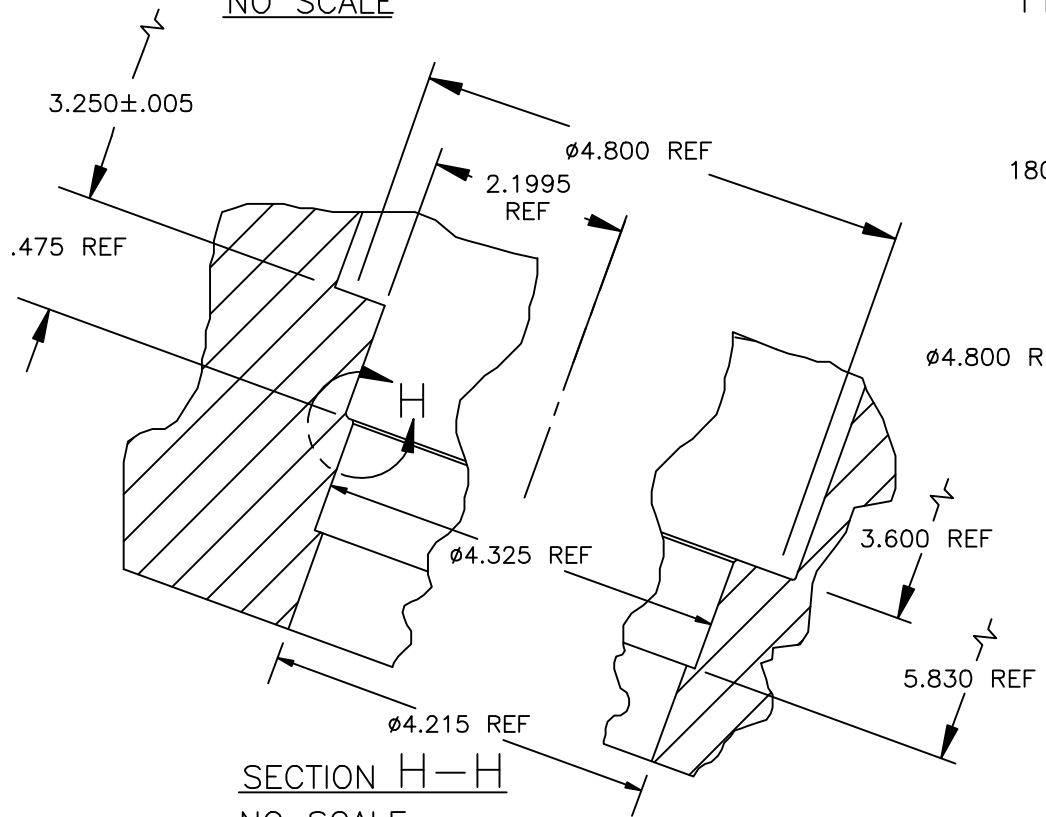
THE INFORMATION DEPICTED HEREIN IS PROPRIETARY DESIGN INFORMATION WHICH IS COPYRIGHTED BY DARTON INTERNATIONAL, INC. NO DUPLICATION OR USE OF THIS INFORMATION IS PERMITTED WITHOUT EXPRESS WRITTEN CONSENT OF DARTON INTERNATIONAL, INC.

DR. BY: CAD DEPT	 Darton International, Inc. Carlsbad, CA USA (800) 713-2786 (760) 603-9895 FAX (760) 603-9629 WWW.DARTON-INTERNATIONAL.COM
DATE: 01/04/07	
DR. BY:	TITLE: M.I.D. BLOCK SPECIFICATION- LS-2/7 4.125 TO 4.200 BORE
MATERIAL:	SIZE: A
HARDNESS:	DWG NO. CYLINDER #1
	SCALE: 1/2
	SHEET 2 OF 3

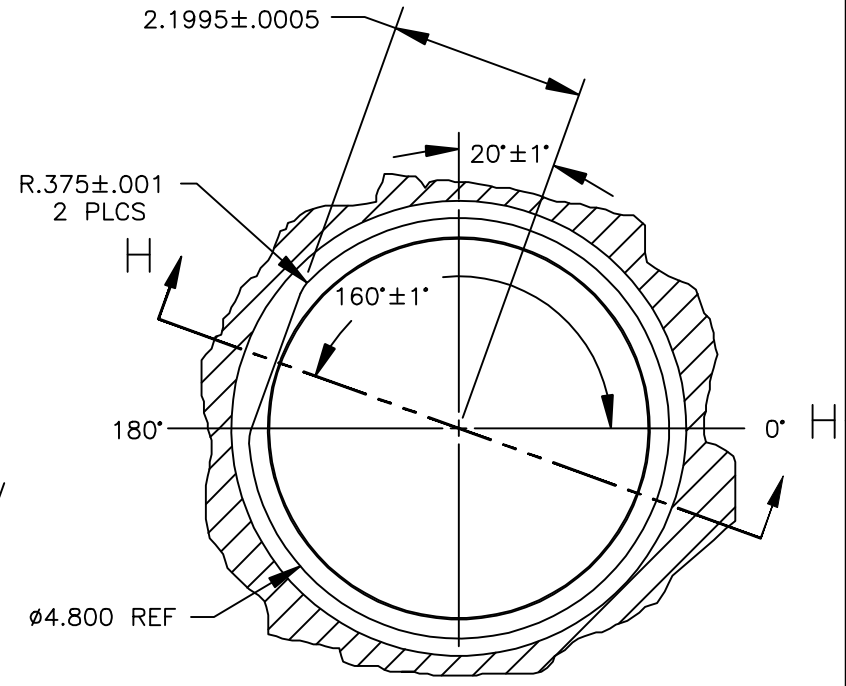
REVISIONS			
REV	DESCRIPTION	DATE	APPROVAL



DETAIL H
NO SCALE




SECTION H-H
NO SCALE



SECTION G-G

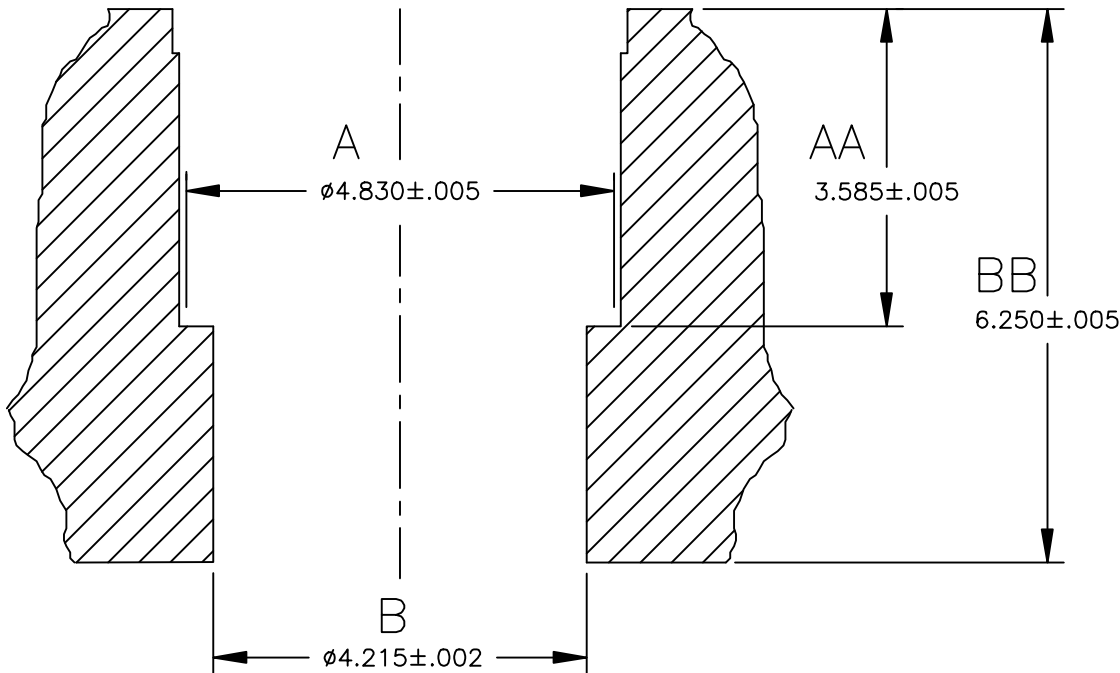
THE INFORMATION DEPICTED HEREIN IS PROPRIETARY DESIGN INFORMATION WHICH IS COPYRIGHTED BY DARTON INTERNATIONAL, INC. NO DUPLICATION OR USE OF THIS INFORMATION IS PERMITTED WITHOUT EXPRESS WRITTEN CONSENT OF DARTON INTERNATIONAL, INC.

 Darton International, Inc. Carlsbad, CA USA (800) 713-2786 (760) 603-9895 FAX (760) 603-9629 WWW.DARTON-INTERNATIONAL.COM		TITLE M.I.D. BLOCK SPECIFICATION- LS-2/7 4.125 TO 4.200 BORE	
		SIZE A	DWG NO. CYLINDER #1
SCALE 1/2	SHEET 3 OF 3		


1st STEP: ROUGHING OUT CYLINDERS 2-8

KIT #600-180 REF

REVISIONS			
REV	DESCRIPTION	DATE	APPROVAL

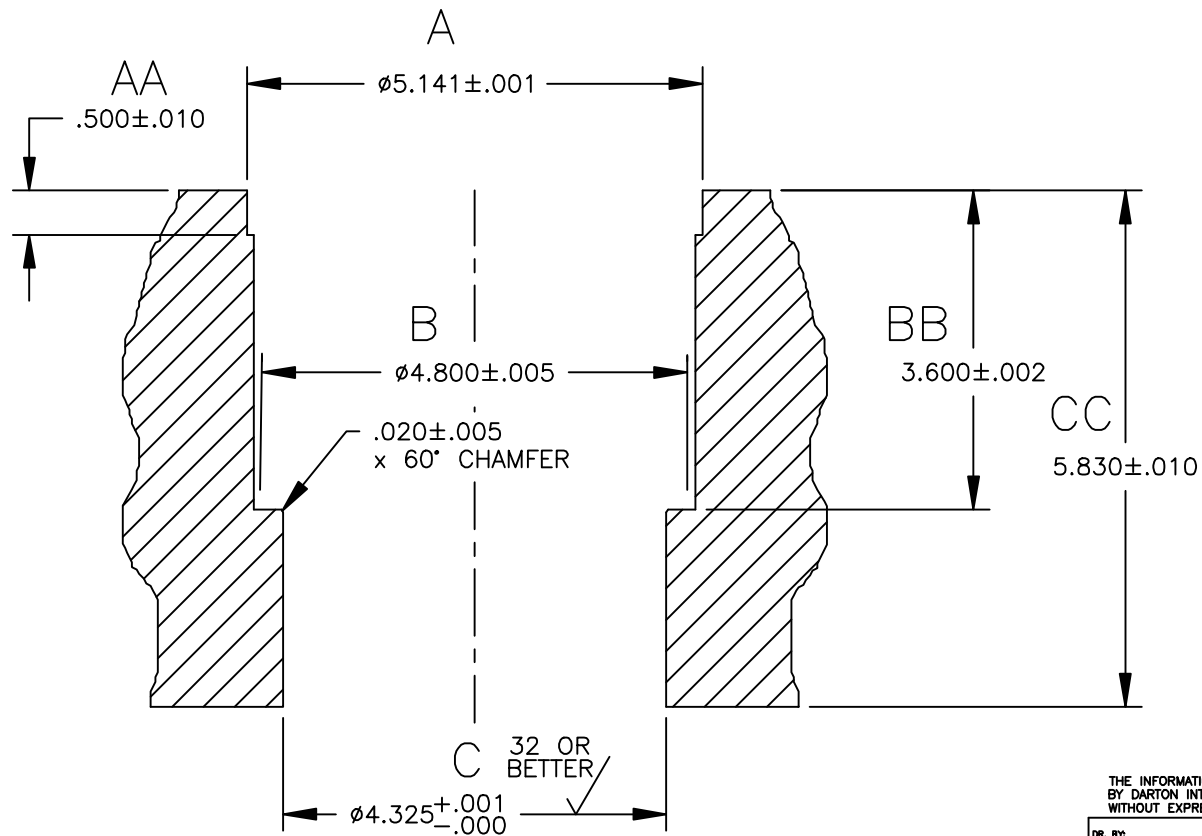


THE INFORMATION DEPICTED HEREIN IS PROPRIETARY DESIGN INFORMATION WHICH IS COPYRIGHTED BY DARTON INTERNATIONAL, INC. NO DUPLICATION OR USE OF THIS INFORMATION IS PERMITTED WITHOUT EXPRESS WRITTEN CONSENT OF DARTON INTERNATIONAL, INC.

DR. BY: CAD DEPT	 Darton International, Inc. Carlsbad, CA USA (800) 713-2786 (760) 603-9895 FAX (760) 603-9629 WWW.DARTON-INTERNATIONAL.COM
DATE: 01/04/07	
CHK'D BY:	TITLE M.I.D. BLOCK SPECIFICATION- LS-2/7 4.125 TO 4.200 BORE
MATERIAL:	SIZE A
HANDNESS:	DWG NO. CYLINDER #2 THRU 8
SCALE 1/2	REV -
SHEET 1 OF 2	

2nd STEP: FINISHING CYLINDERS 2-8

REVISIONS			
REV	DESCRIPTION	DATE	APPROVAL



THE INFORMATION DEPICTED HEREIN IS PROPRIETARY DESIGN INFORMATION WHICH IS COPYRIGHTED BY DARTON INTERNATIONAL, INC. NO DUPLICATION OR USE OF THIS INFORMATION IS PERMITTED WITHOUT EXPRESS WRITTEN CONSENT OF DARTON INTERNATIONAL, INC.

DR. BY: CAD DEPT		Darton International, Inc.	
DATE: 01/04/07		Carlsbad, CA USA	
CHK'D BY:		(800) 713-2786 (760) 603-9895	
MATERIAL:		FAX (760) 603-9629	
HANDNESS:		WWW.DARTON-INTERNATIONAL.COM	
SIZE: A		TITLE: M.I.D. BLOCK SPECIFICATION-LS-2/7 4.125 TO 4.200 BORE	
SCALE: 1/2		DWG NO. CYLINDER #2 THRU 8	REV: -
		SHEET 2 OF 2	