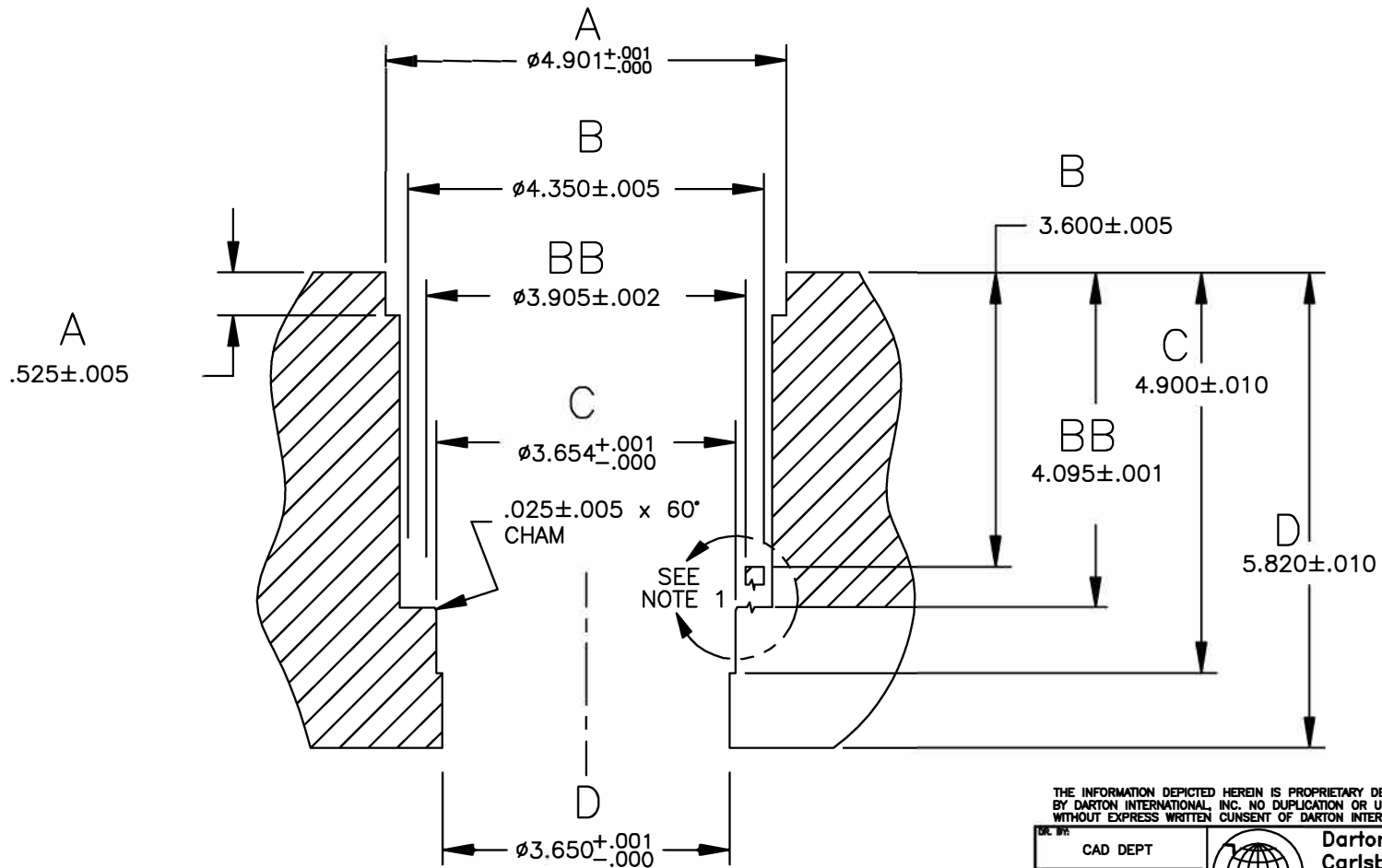



NOTE:

- ON #1 CYL REMOVE REMAINING 320° ALUM WALL DOWN TO 4.095 BY MILLING OR HAND GRINDING. THIS WILL ELIMINATE ALL ALUM. WALL THAT WOULD FORM A GAP BETWEEN SLEEVE AND WATER JACKET. REFER TO PHOTO PAGE 11 IN INSTALLATION MANUAL.

REVISIONS			
REV	DESCRIPTION	DATE	APPROVAL

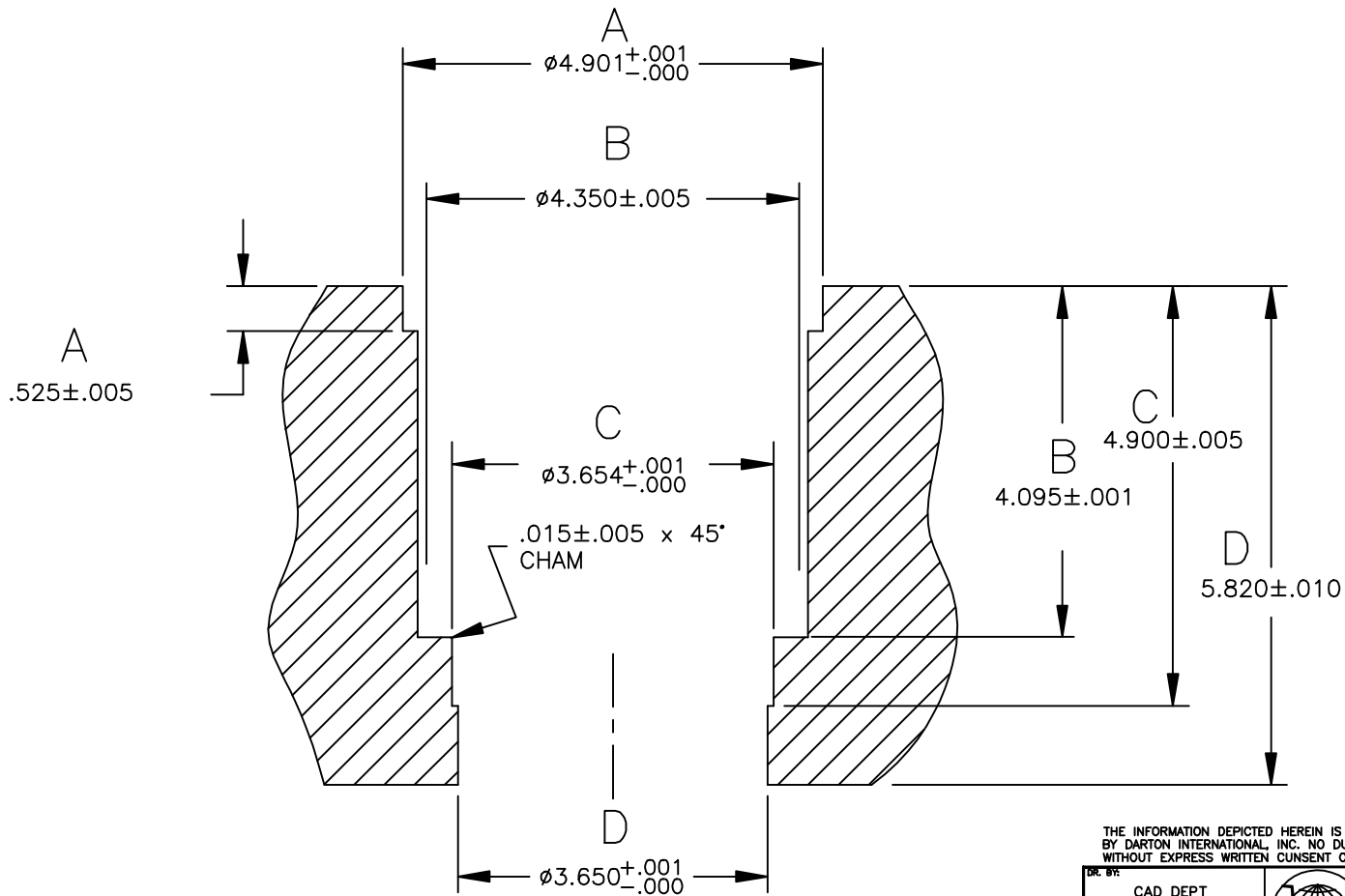


THE INFORMATION DEPICTED HEREIN IS PROPRIETARY DESIGN INFORMATION WHICH IS COPYRIGHTED BY DARTON INTERNATIONAL, INC. NO DUPLICATION OR USE OF THIS INFORMATION IS PERMITTED WITHOUT EXPRESS WRITTEN CONSENT OF DARTON INTERNATIONAL, INC.


DR. BY:	CAD DEPT	 Darton International, Inc. Carlsbad, CA USA (800) 713-2786 (760) 603-9895 FAX (760) 603-9829 WWW.DARTON-INTERNATIONAL.COM
DATE:	12/04/04	
CHK'D BY:		TITLE: BLOCK SPECIFICATION-CYLS #1
MATERIAL:		M.I.D. F-20 87-90mm
HARDNESS:		SIZE: A DWG NO.: 400-220-P REV: A
		SCALE: 1/2 SHEET: 1 OF 2

REVISIONS

REV	DESCRIPTION	DATE	APPROVAL



THE INFORMATION DEPICTED HEREIN IS PROPRIETARY DESIGN INFORMATION WHICH IS COPYRIGHTED BY DARTON INTERNATIONAL, INC. NO DUPLICATION OR USE OF THIS INFORMATION IS PERMITTED WITHOUT EXPRESS WRITTEN CONSENT OF DARTON INTERNATIONAL, INC.

DR. BY:	CAD DEPT	 Darton International, Inc. Carlsbad, CA USA (800) 713-2786 (760) 603-9895 FAX (760) 603-9629 WWW.DARTON-INTERNATIONAL.COM
DATE:	12/04/04	
CHK'D BY:		TITLE
MATERIAL:		BLOCK SPECIFICATION-CYLS #2, 3,&4 M.I.D. F-20 87-90mm
HARDNESS:		SIZE
		A
		DWG NO.
		400-220-P
		REV
		A
		SCALE
		1/2
		SHEET
		2 OF 2