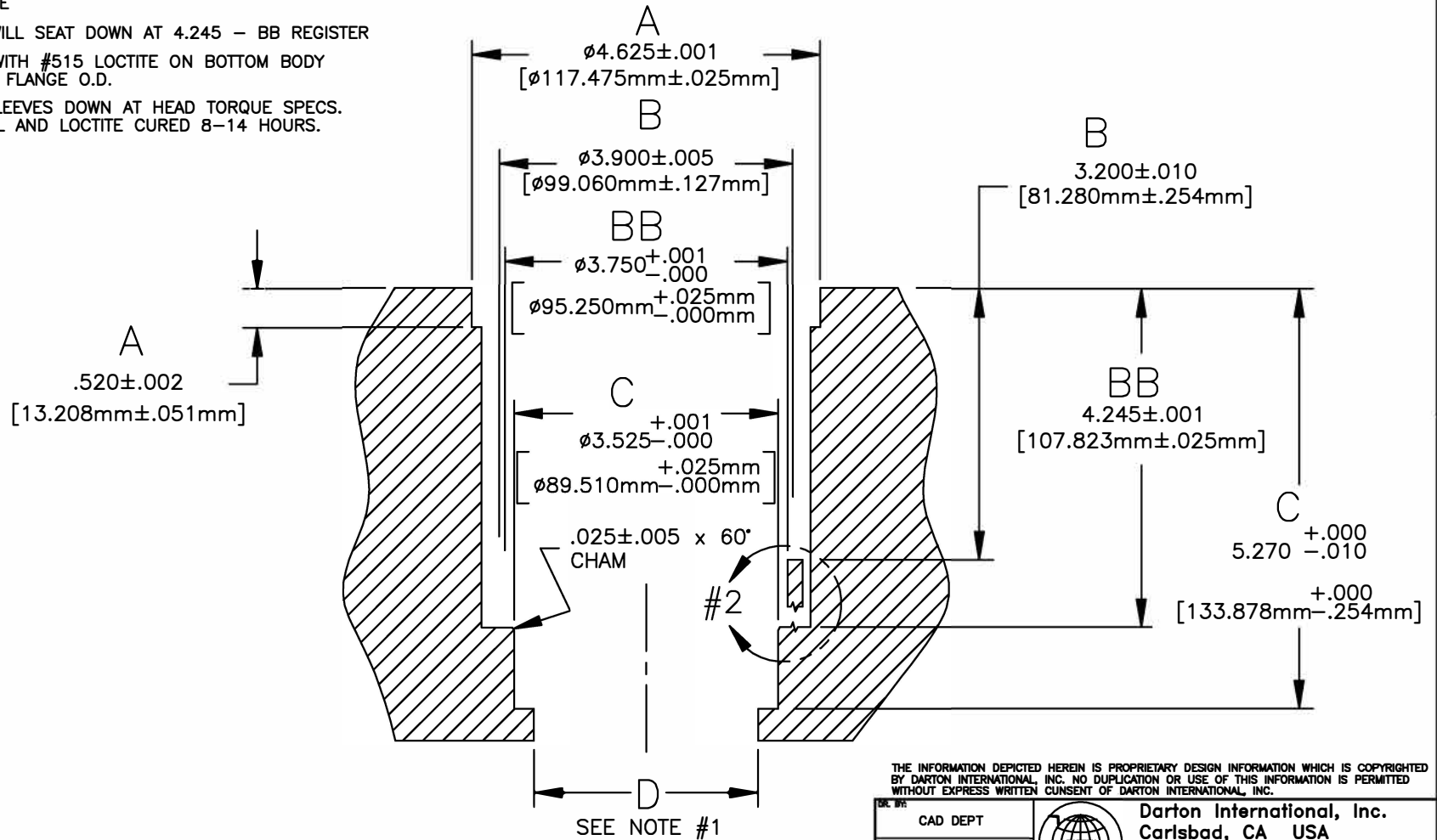


NOTE:


1. BORE THRU TO MAIN WEB AT FINISH
BORE DIA +.010
2. REMOVE REMAINING ALUM. WALL AT BOTTOM BY
GRINDING, MILLING OR BREAK AWAY DOWN TO
BB SPEC. 4.245
3. SLEEVES NEED TO HAVE .001 PRESS FIT MAX
AT FLANGE
4. SLEEVE WILL SEAT DOWN AT 4.245 - BB REGISTER
5. INSTALL WITH #515 LOCTITE ON BOTTOM BODY
AND TOP FLANGE O.D.
6. CLAMP SLEEVES DOWN AT HEAD TORQUE SPECS.
TILL COOL AND LOCTITE CURED 8-14 HOURS.

REVISIONS

| REV | DESCRIPTION | DATE | APPROVAL |
|-----|-------------|------|----------|
| | | | |



THE INFORMATION DEPICTED HEREIN IS PROPRIETARY DESIGN INFORMATION WHICH IS COPYRIGHTED BY DARTON INTERNATIONAL, INC. NO DUPLICATION OR USE OF THIS INFORMATION IS PERMITTED WITHOUT EXPRESS WRITTEN CONSENT OF DARTON INTERNATIONAL, INC.

| | | |
|-----------|----------|------------------------------------------------------------------------------------------------------------------------------------------------------------------------------------------------------------------------------------|
| DR. BY: | CAD DEPT |  Darton International, Inc. Carlsbad, CA USA (800) 713-2786 (760) 603-9895 FAX (760) 603-9829 WWW.DARTON-INTERNATIONAL.COM |
| DATE: | 9/15/03 | |
| CHKD BY: | | TITLE: BLOCK SPECIFICATION HONDA B-16 87mm DRAG |
| MATERIAL: | | SIZE: A DWG NO. 400-170 REV: - |
| ADDRESS: | | SCALE: 1/2 SHEET 1 OF 1 |