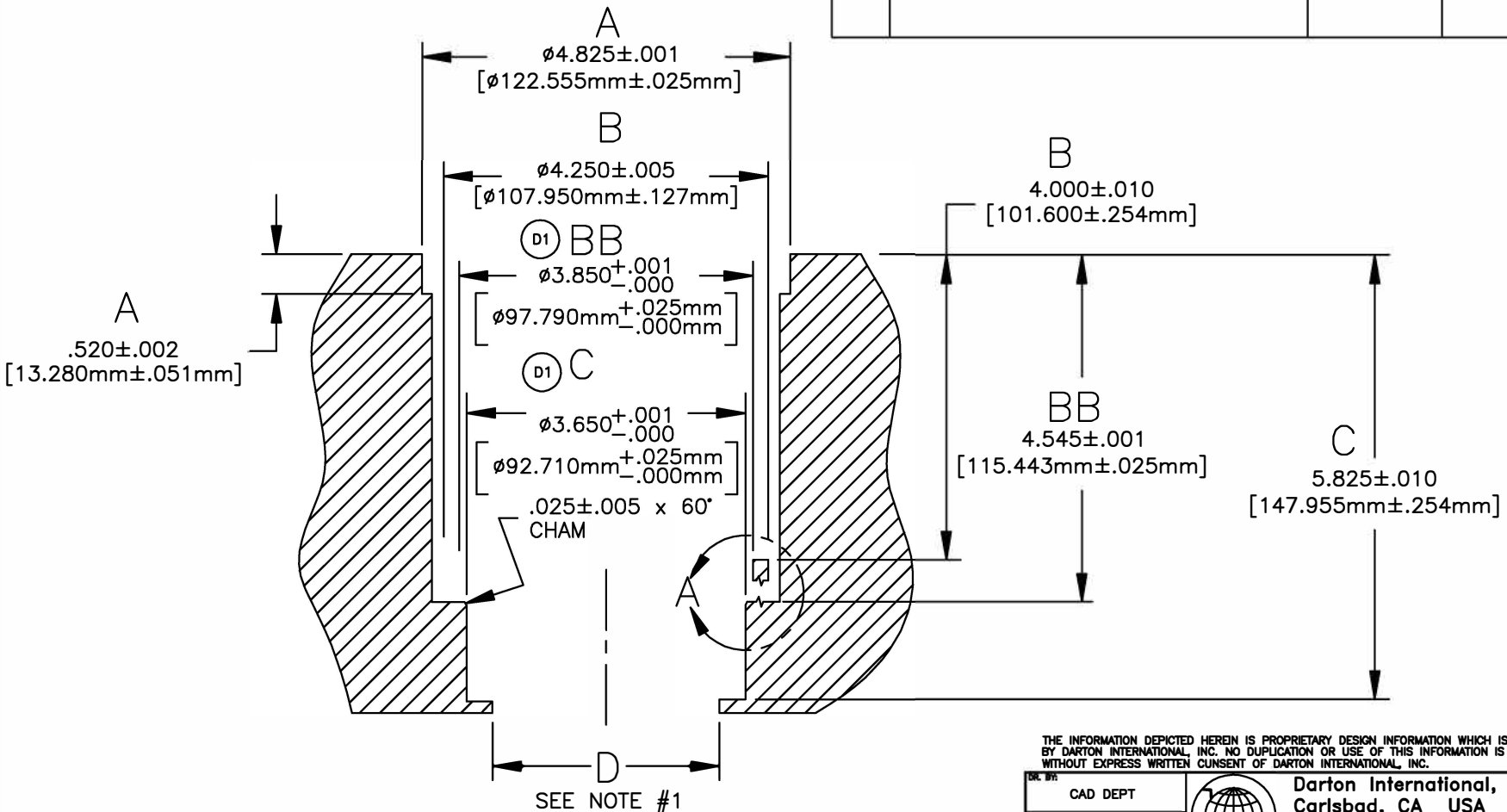


NOTE:


1. BORE THRU TO MAIN WEB AT FINISH
BORE DIA +.010
2. ON #1 & 4 CYL'S REMOVE REMAINING 320° ALUM
WALL DOWN TO 4.545 BY MILLING OR HAND GRINDING.
THIS WILL ELIMINATE ALL ALUM. WALL THAT WOULD
FORM A GAP BETWEEN SLEEVE AND WATER JACKET.
REFER TO PHOTO #6162 IN INSTALLATION MANUAL.

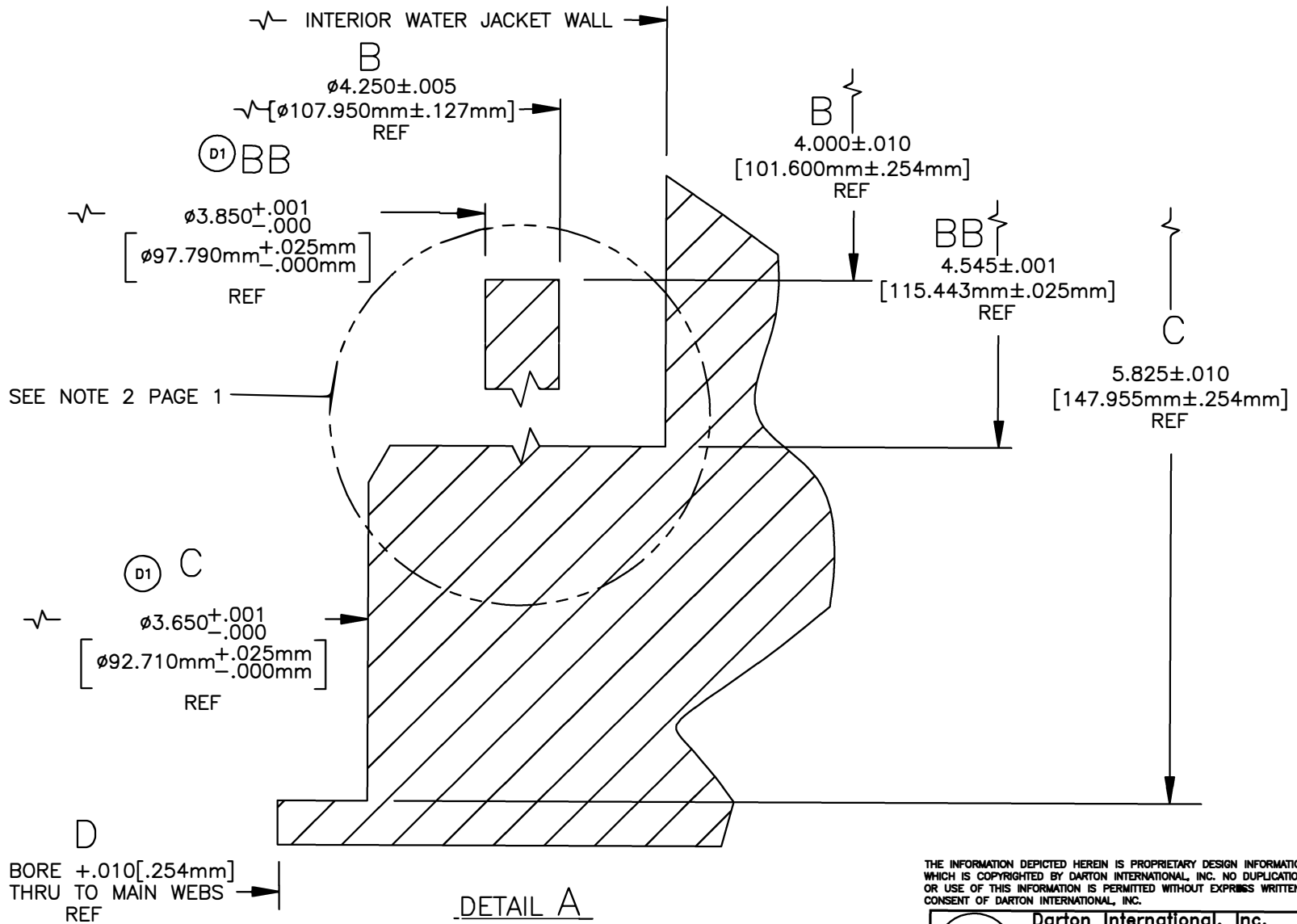


REVISIONS

REV	DESCRIPTION	DATE	APPROVAL

THE INFORMATION DEPICTED HEREIN IS PROPRIETARY DESIGN INFORMATION WHICH IS COPYRIGHTED BY DARTON INTERNATIONAL, INC. NO DUPLICATION OR USE OF THIS INFORMATION IS PERMITTED WITHOUT EXPRESS WRITTEN CONSENT OF DARTON INTERNATIONAL, INC.

DR. BY: CAD DEPT	 Darton International, Inc. Carlsbad, CA USA (800) 713-2786 (760) 603-9895 FAX (760) 603-9629 WWW.DARTON-INTERNATIONAL.COM
DATE: 01/21/03	
CHKD BY:	TITLE: BLOCK SPECIFICATION-CYLS #1&4 HONDA M.I.D. H-22 87-90mm
MATERIAL:	SIZE: A DWD NO. 400-160-P REV D
HARDNESS:	SCALE: 1/2 SHEET 1 OF 4



DETAIL A
NO SCALE

THE INFORMATION DEPICTED HEREIN IS PROPRIETARY DESIGN INFORMATION WHICH IS COPYRIGHTED BY DARTON INTERNATIONAL, INC. NO DUPLICATION OR USE OF THIS INFORMATION IS PERMITTED WITHOUT EXPRESS WRITTEN CONSENT OF DARTON INTERNATIONAL, INC.

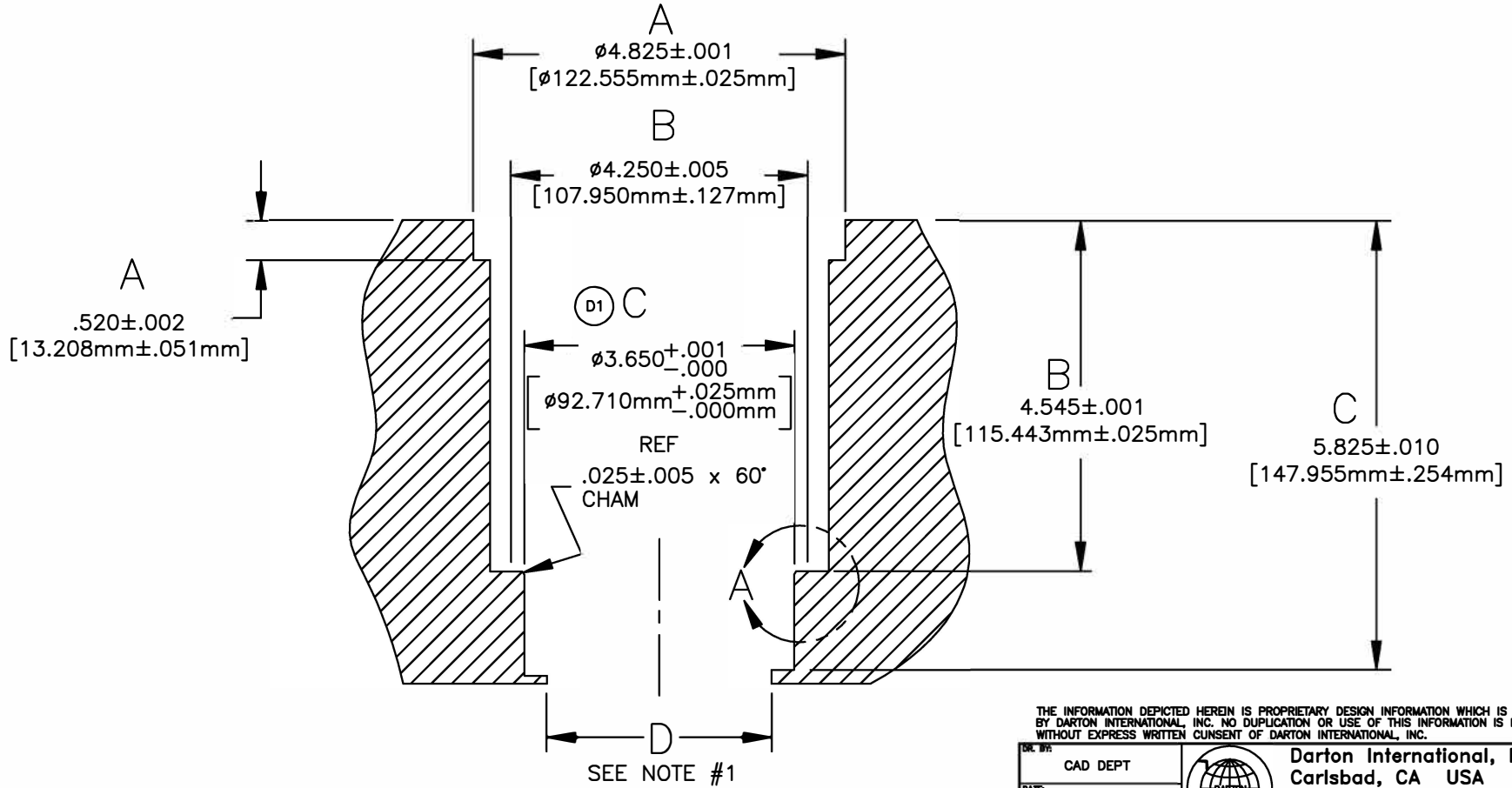
 Darton International, Inc. Carlsbad, CA USA (800) 713-2786 (760) 603-9895 FAX (760) 603-9829 WWW.DARTON-INTERNATIONAL.COM		
TITLE BLOCK SPECIFICATION-CYL #1 & 4 HONDA M.I.D. H-22 87-90mm		
SIZE A	DWG NO. 400-160-P	REV D
SCALE 1/2		SHEET 2 OF 4

NOTE:


- BORE THRU TO MAIN WEB AT FINISH
BORE DIA +.010

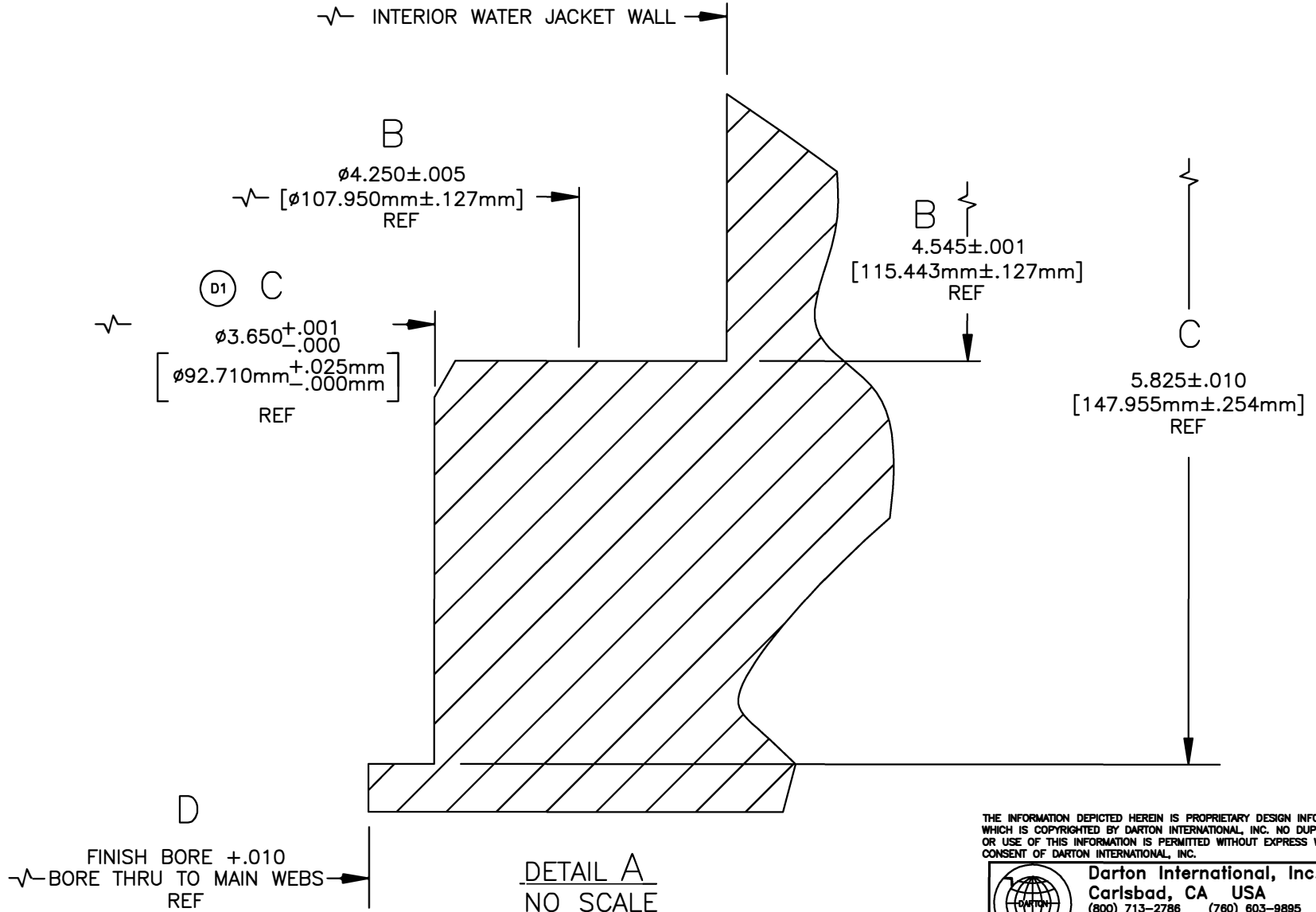
REVISIONS

REV	DESCRIPTION	DATE	APPROVAL



THE INFORMATION DEPICTED HEREIN IS PROPRIETARY DESIGN INFORMATION WHICH IS COPYRIGHTED BY DARTON INTERNATIONAL, INC. NO DUPLICATION OR USE OF THIS INFORMATION IS PERMITTED WITHOUT EXPRESS WRITTEN CONSENT OF DARTON INTERNATIONAL, INC.

DR. BY:	CAD DEPT	 Darton International, Inc. Carlsbad, CA USA (800) 713-2786 (760) 603-9895 FAX (760) 603-9629 WWW.DARTON-INTERNATIONAL.COM		
DATE:	01/21/03			
CHK'D BY:		TITLE		
MATERIAL:		BLOCK SPECIFICATION-CYLS #2 & 3 HONDA M.I.D. H-22 87-90mm		
HARDNESS:		SIZE	DWG NO.	REV
		A	400-160-P	D
		SCALE		SHEET
		1/2		3 OF 4



DETAIL A
NO SCALE

THE INFORMATION DEPICTED HEREIN IS PROPRIETARY DESIGN INFORMATION WHICH IS COPYRIGHTED BY DARTON INTERNATIONAL, INC. NO DUPLICATION OR USE OF THIS INFORMATION IS PERMITTED WITHOUT EXPRESS WRITTEN CONSENT OF DARTON INTERNATIONAL, INC.



Darton International, Inc.
 Carlsbad, CA USA
 (800) 713-2786 (760) 603-9895
 FAX (760) 603-9629
 WWW.DARTON-INTERNATIONAL.COM

TITLE BLOCK SPECIFICATION-CYLS #2 & 3
 HONDA M.I.D. H-22 87-90mm

SIZE A	DWG NO. 400-160-P	REV D
SCALE 1/2	SHEET 4 OF 4	