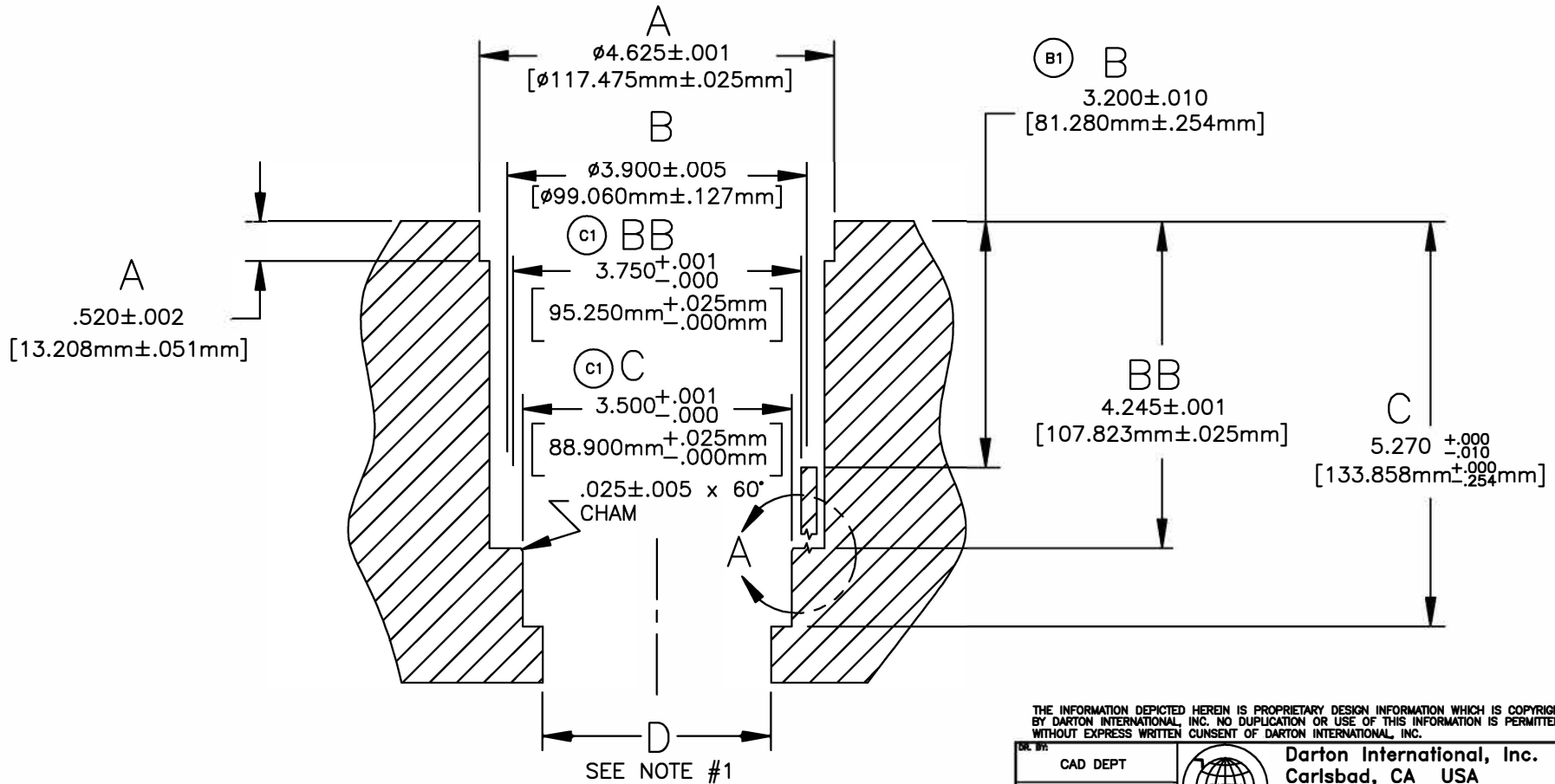



**NOTE:**

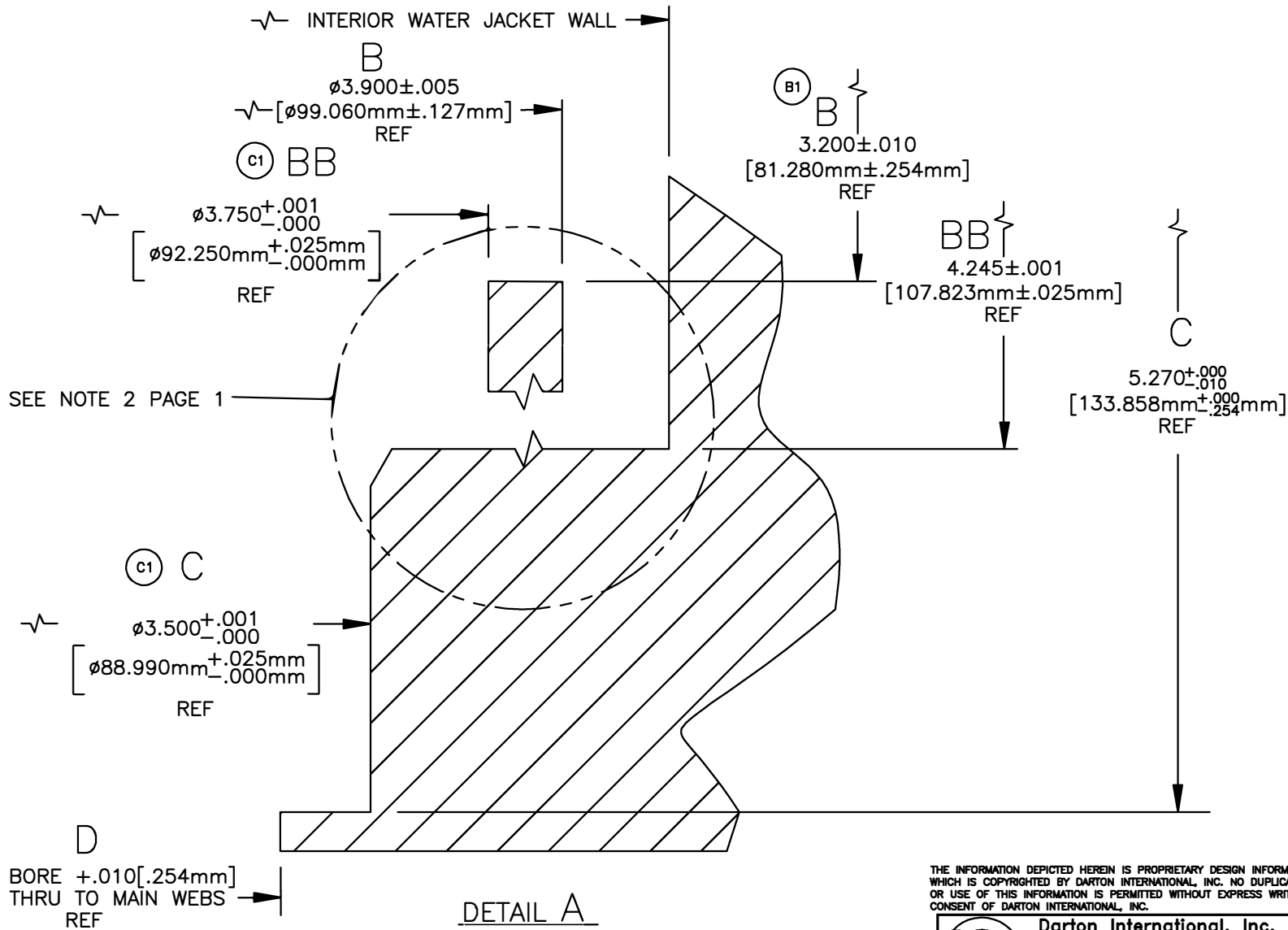
1. BORE THRU TO MAIN WEB AT FINISH  
BORE DIA +.010
2. ON #1 CYL ONLY REMOVE REMAINING 320° ALUM WALL  
DOWN TO 4.245 BY MILLING OR HAND GRINDING.  
THIS WILL ELIMINATE ALL ALUM. WALL THAT WOULD  
FORM A GAP BETWEEN SLEEVE AND WATER JACKET.  
REFER TO PHOTO #6162 IN INSTALLATION MANUAL.

REVISIONS			
REV	DESCRIPTION	DATE	APPROVAL



THE INFORMATION DEPICTED HEREIN IS PROPRIETARY DESIGN INFORMATION WHICH IS COPYRIGHTED BY DARTON INTERNATIONAL, INC. NO DUPLICATION OR USE OF THIS INFORMATION IS PERMITTED WITHOUT EXPRESS WRITTEN CONSENT OF DARTON INTERNATIONAL, INC.

DR. BY:	CAD DEPT	 <b>Darton International, Inc.</b> Carlsbad, CA USA (800) 713-2786 (760) 603-9895 FAX (760) 603-9629 WWW.DARTON-INTERNATIONAL.COM		
DATE:	01/29/03			
CHKD BY:		TITLE		
MATERIAL:		BLOCK SPECIFICATION-CYL #1 HONDA M.I.D. B-16 81mm		
HARDNESS:		SIZE	DWG NO.	REV
		A	400-110-P	C
		SCALE		SHEET
		1/2		1 OF 6



SEE NOTE 2 PAGE 1

DETAIL A  
NO SCALE

THE INFORMATION DEPICTED HEREIN IS PROPRIETARY DESIGN INFORMATION WHICH IS COPYRIGHTED BY DARTON INTERNATIONAL, INC. NO DUPLICATION OR USE OF THIS INFORMATION IS PERMITTED WITHOUT EXPRESS WRITTEN CONSENT OF DARTON INTERNATIONAL, INC.

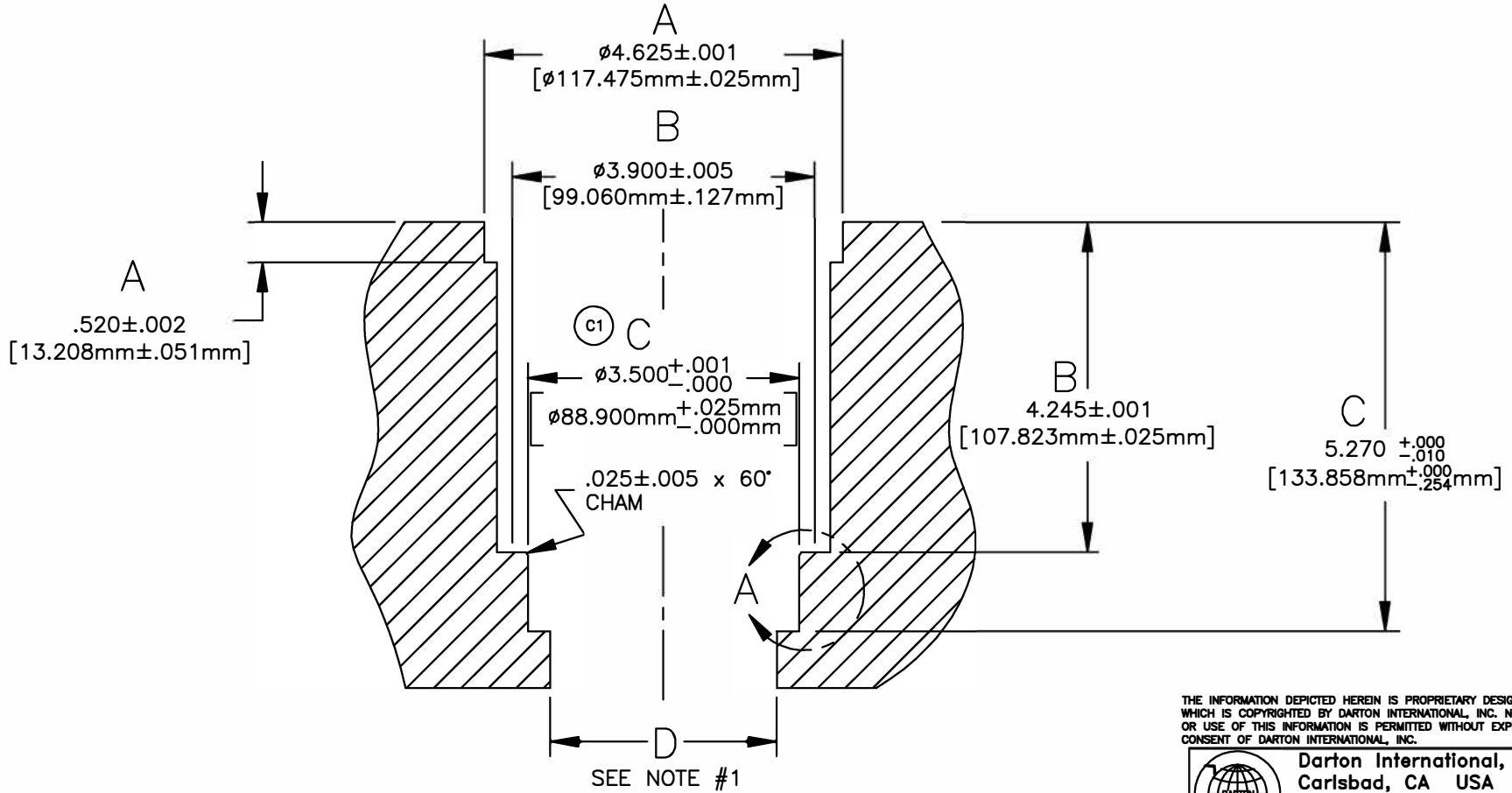
 <b>Darton International, Inc.</b> Carlsbad, CA USA (800) 713-2786 (760) 603-9895 FAX (760) 603-9829 WWW.DARTON-INTERNATIONAL.COM		
SIZE	DWG NO.	REV
A	400-110-P	C
SCALE	SHEET	
1/2	2 OF 6	

**NOTE:**

- BORE THRU TO MAIN WEB AT FINISH  
BORE DIA +.010

REVISIONS

REV	DESCRIPTION	DATE	APPROVAL



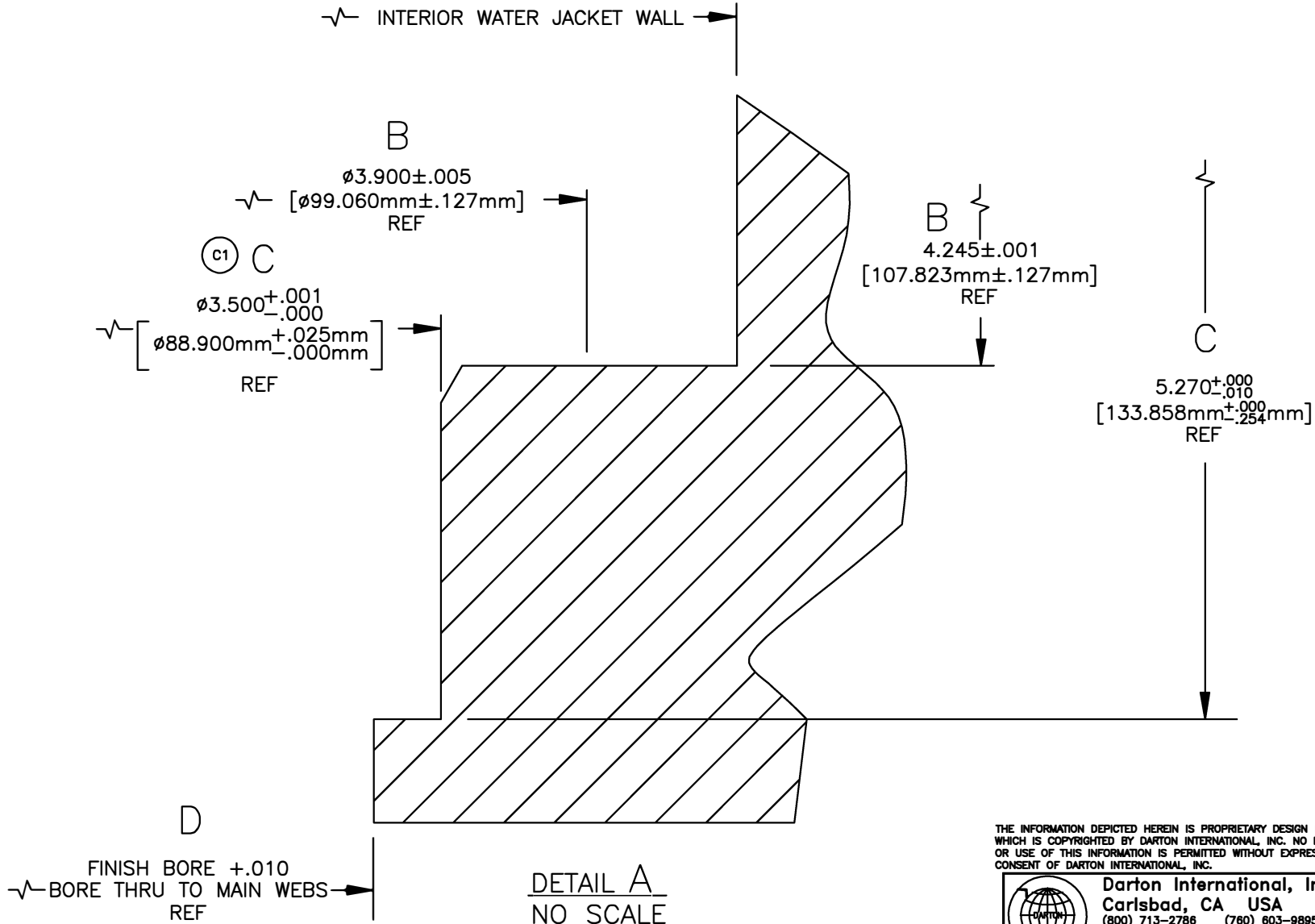
THE INFORMATION DEPICTED HEREIN IS PROPRIETARY DESIGN INFORMATION WHICH IS COPYRIGHTED BY DARTON INTERNATIONAL, INC. NO DUPLICATION OR USE OF THIS INFORMATION IS PERMITTED WITHOUT EXPRESS WRITTEN CONSENT OF DARTON INTERNATIONAL, INC.



**Darton International, Inc.**  
 Carlsbad, CA USA  
 (800) 713-2786 (760) 603-9895  
 FAX (760) 603-9829  
 WWW.DARTON-INTERNATIONAL.COM

TITLE BLOCK SPECIFICATION-CYLS #2-3  
 HONDA M.I.D. B-16 81mm

SIZE <b>A</b>	DWG NO. 400-110-P	REV <b>C</b>
SCALE 1/2	SHEET 3 OF 6	



THE INFORMATION DEPICTED HEREIN IS PROPRIETARY DESIGN INFORMATION WHICH IS COPYRIGHTED BY DARTON INTERNATIONAL, INC. NO DUPLICATION OR USE OF THIS INFORMATION IS PERMITTED WITHOUT EXPRESS WRITTEN CONSENT OF DARTON INTERNATIONAL, INC.



**Darton International, Inc.**  
 Carlsbad, CA USA  
 (800) 713-2786 (760) 603-9895  
 FAX (760) 603-9629  
 WWW.DARTON-INTERNATIONAL.COM

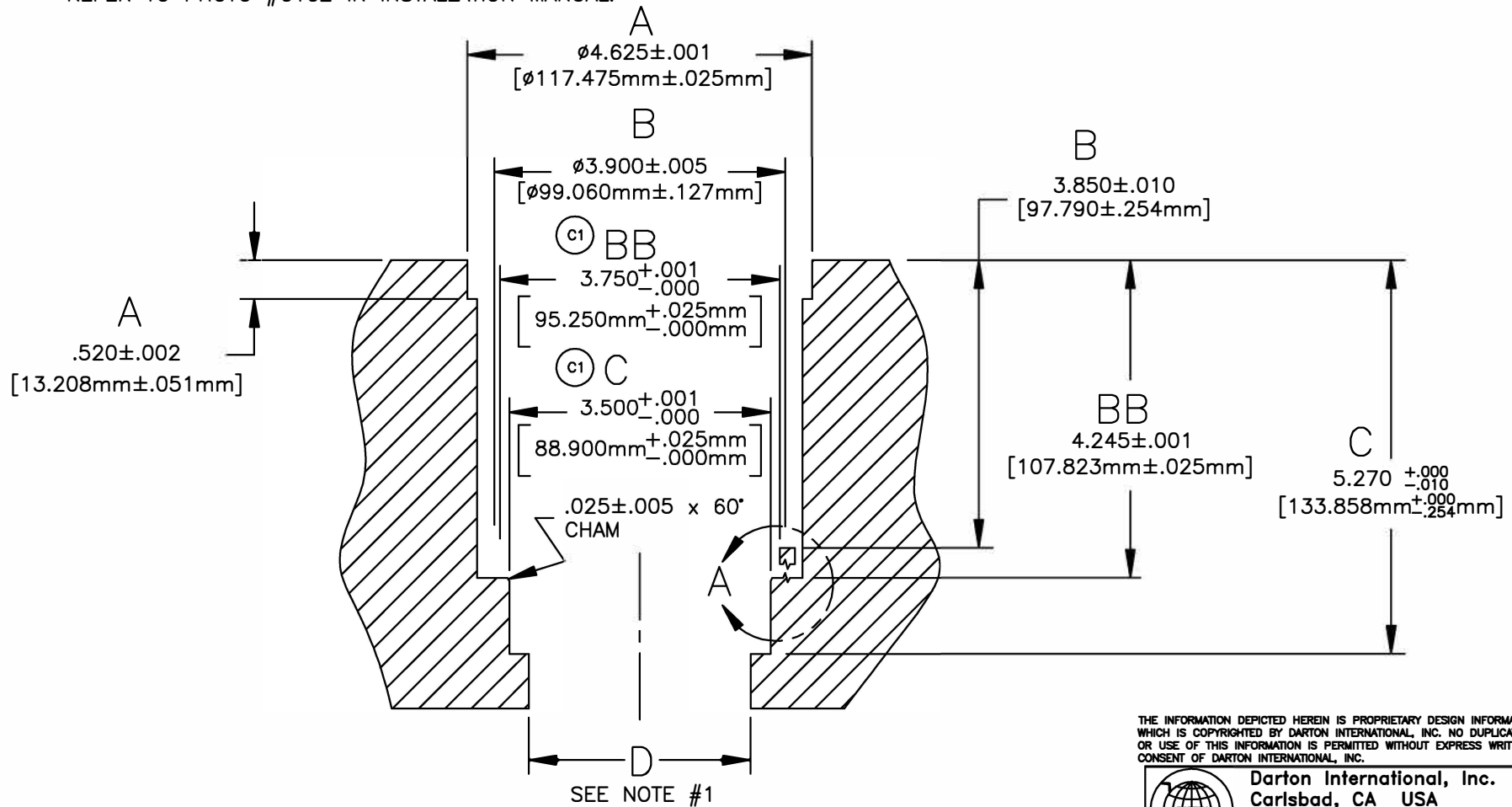
TITLE BLOCK SPECIFICATION-CYLS #2-3  
 HONDA M.I.D. B-16 81mm

SIZE A	DWG NO. 400-110-P	REV C
SCALE 1/2	SHEET 4 OF 6	

**NOTE:**

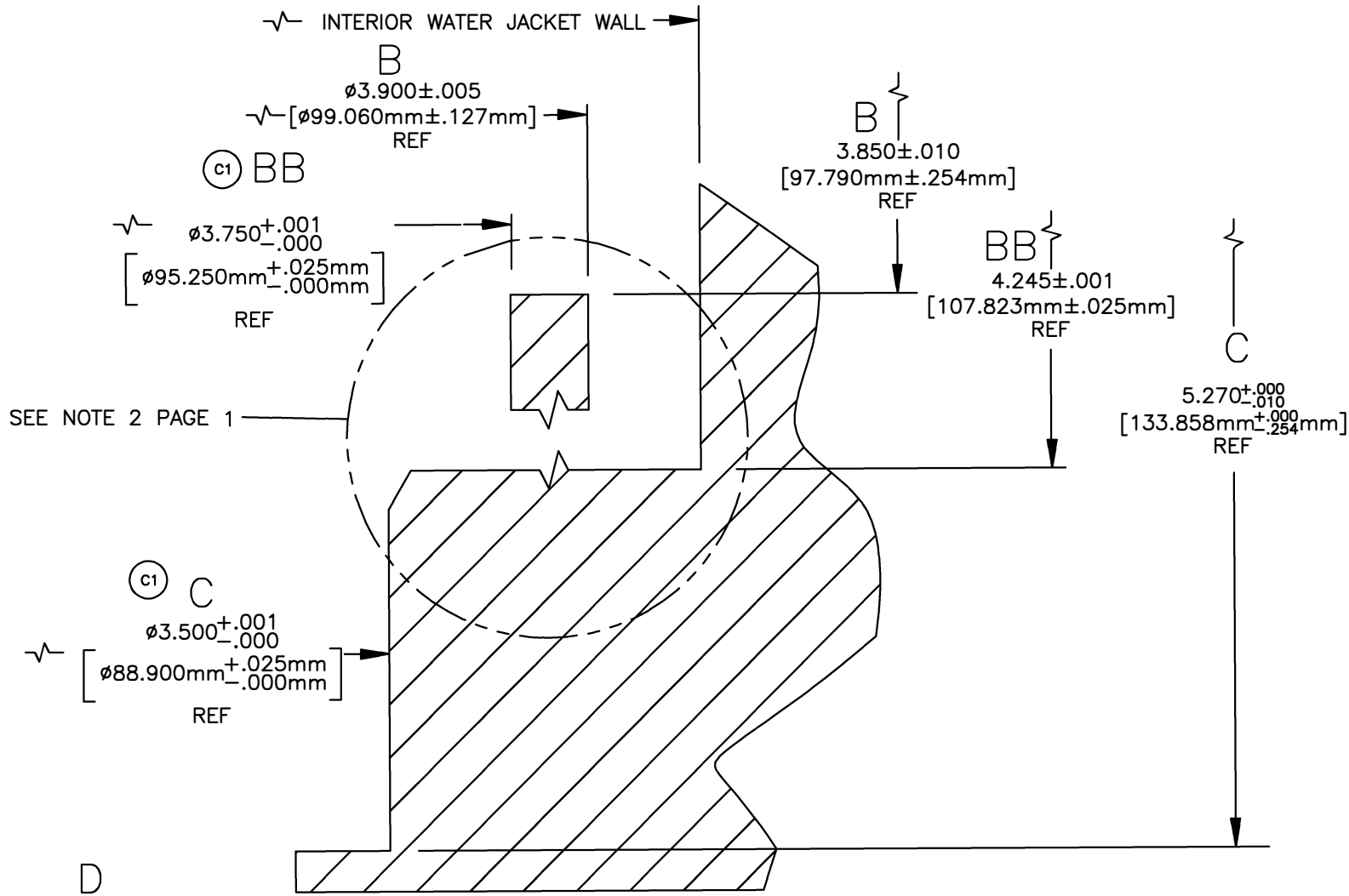
1. BORE THRU TO MAIN WEB AT FINISH  
BORE DIA +.010
2. ON #4 CYL ONLY REMOVE REMAINING 280° ALUM WALL  
DOWN TO 4.245 BY MILLING OR HAND GRINDING.  
THIS WILL ELIMINATE ALL ALUM. WALL THAT WOULD  
FORM A GAP BETWEEN SLEEVE AND WATER JACKET.  
REFER TO PHOTO #6162 IN INSTALLATION MANUAL.

REVISIONS			
REV	DESCRIPTION	DATE	APPROVAL



THE INFORMATION DEPICTED HEREIN IS PROPRIETARY DESIGN INFORMATION WHICH IS COPYRIGHTED BY DARTON INTERNATIONAL, INC. NO DUPLICATION OR USE OF THIS INFORMATION IS PERMITTED WITHOUT EXPRESS WRITTEN CONSENT OF DARTON INTERNATIONAL, INC.

 <b>Darton International, Inc.</b> Carlsbad, CA USA (800) 713-2786 (760) 603-9895 FAX (760) 603-9629 WWW.DARTON-INTERNATIONAL.COM		
TITLE <b>BLOCK SPECIFICATION-CYL #4</b> <b>HONDA M.I.D. B-16 81mm</b>		
SIZE <b>A</b>	DWG NO. <b>400-110-P</b>	REV <b>C</b>
SCALE <b>1/2</b>	SHEET <b>5</b> OF <b>6</b>	



DETAIL A  
NO SCALE

THE INFORMATION DEPICTED HEREIN IS PROPRIETARY DESIGN INFORMATION WHICH IS COPYRIGHTED BY DARTON INTERNATIONAL, INC. NO DUPLICATION OR USE OF THIS INFORMATION IS PERMITTED WITHOUT EXPRESS WRITTEN CONSENT OF DARTON INTERNATIONAL, INC.

 Darton International, Inc. Carlsbad, CA USA (800) 713-2786 (760) 603-9895 FAX (760) 603-9829 WWW.DARTON-INTERNATIONAL.COM		
SIZE	DWG NO.	REV
A	400-110-P	C
SCALE	SHEET 6 OF 6	
1/2		